

# Hawraa Hassan

وراء حسن

## Portfolio

**Interior Designer**

*Hawra'a Hassan*



*«Design is an expression of the purpose, and it may (if it is good enough) later be judged as art; design depends largely on constraints and it is a method of action (there are always constraints and these usually include ethic.»*

DOUGLAS ADAMS

# Table of Contents

**O1: “More Than Art  
Cafe”**

**O2: Social Designs**

**O3: Light Designs**

**O4: Residential Designs**

**O5: Commercial Designs**

**O6: Furniture Designs**

**O7: Internship**

**O8: Visual Art**

**O9: Graphic Design**



# “More Than Art Cafe”



# “More Than Art Cafe”

## “More Than Art Cafe”



### WHAT?

#### WHO ?



### WHY?

- The schedules of workshops.
- The membership that some feel stuck with.
- Encouraging art in our society.
- Some could help the stress release.
- A rise of a future artist.

### WHERE?

#### THE DUBAI MALL



“MORE THAN ART CAFE”  
“THE DUBAI MALL”



RESEARCH



A Journey from the fashion avenue parking to "More Than Art Café", to show how easy the location is and how strategic it is, since it is beside kinokuniya and all electronic shops as well, and the café is shown from two floors down.

### Case Studies

#### MORE Cafe



- Gallery
- Relaxing environment

#### BoHouse



- Calm atmosphere
- White and colorful areas
- Soft lighting
- Nice beach view

#### The Pavillion Downtown:

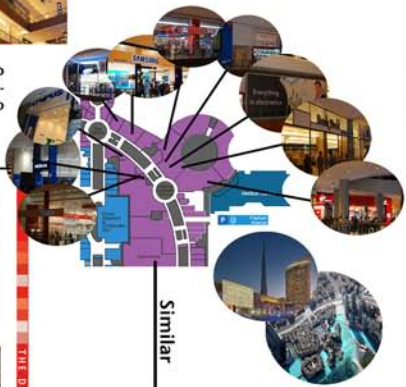


- relaxing atmosphere
- Inspiring View
- Using bookshelves as partitions for the study area
- Meeting area in a close space to reduce the noises

#### cafe ceramique



- Bad lighting
- Bad service
- Limited food
- Dull atmosphere
- Lake of artistic spirit



The Dubai Mall, have only one café that is somehow similar to my café, but the café only have an Art Gallery and it don't contain all the facilities I am giving in my café. So my café will be the first in "The Dubai Mall".



### Why i choose this location ?

Because Kinokuniya is one of Dubai mall's large visitors, and their target are similar to the target of "More Than Art Cafe", were it contains different nationalities, age and interests, and because this floor is most visited also since it is the electronic floor.

The cafe is visible from the first floor as well so it will attract people from down.

I asked many people if the location is good or not, and all agreed on the location of the café, because it is a Strategic place since it is the first thing they see after getting out of Kinokuniya, and they say that they need something like this in our society. .

Survey:

### Bus Stops Near "The Dubai Mall"



Site Survey:



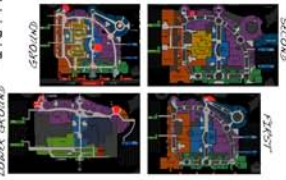
Facade of the site



### Electricity Switches



### Existing café's in Dubai Mall

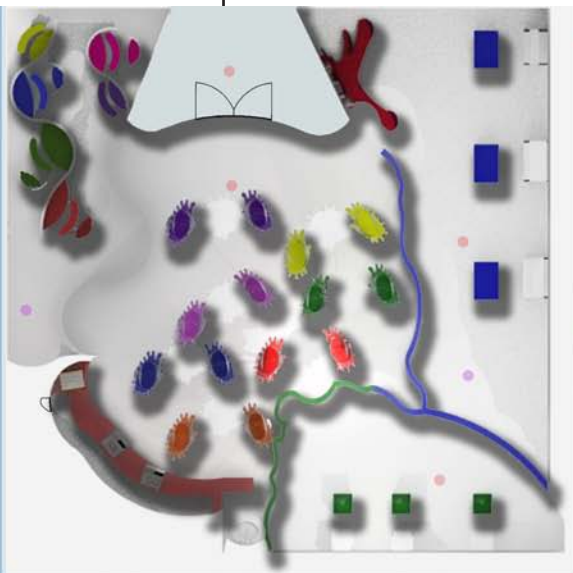


The red spaces are the existing cafes in The Dubai Mall, the total of cafe's are "35", but known of them are art cafes except for "More cafe" they exhibit Art works only. The green space is the location of "More than Art Cafe". Their is a small cafe inside Kinokuniya but many told me that they dont like the cafe because it is small , expensive and they serve Japiness food only.



# MORE THAN ART CAFE

CONCEPT



Floor Plan | Scale 1:50

The entrance and the middle area are for people to brainstorm before they start painting, because it's harder for people to paint directly on canvas without thinking or sketching their painting. So the entrance painting will be one inspiration, the small exhibition will be the second and the third is the paint splash in the middle of the café, so when they go to the studio space they will be filled with inspirations and the whiteboard painted wall will help them to sketch largely, and will give them the feeling of the street art as well.

The quiet area is for people who don't want to involve that much with the studio so they can have a nice view from their place with a relaxing and calm environment.

The concept of the entrance is people entering a painting not a café and when they enter they see more paintings and then they go inside the paint.



### Studio Color Scheme

the blue color indicates the adult's studio area since it is a primary color and the green indicates the children's studio area since it is a secondary color.



### Cafe Furniture Color Scheme

The whole café is colored in White that continues the concept of white canvas, and the things that are used in the café are colored, like the seats or the steps are colored, so it will guide people to find their needs and it will make it easier for them to find what they want. This concept presents the use of paint.

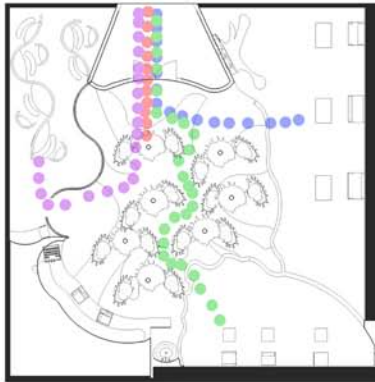
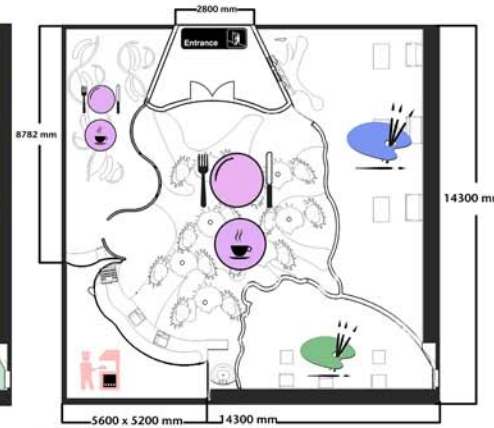
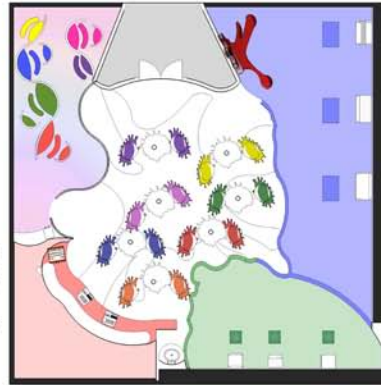
ELEVATION 1



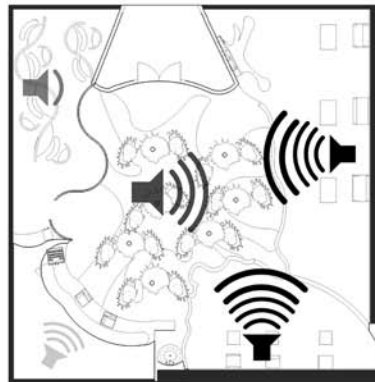
ELEVATION 2



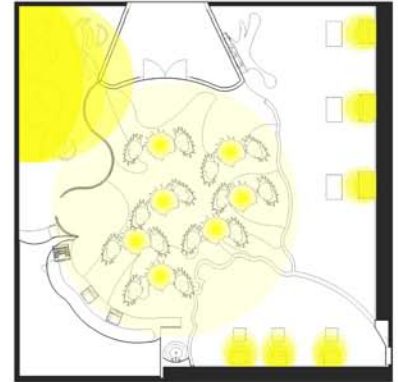
- The gray space indicates the entrance as well as the space where the artworks of the people who paint in the café will be exhibited.
- Blue and green spaces are open studio space, studies said that open studios are best for new and mix of inspiration, so this is part of my concept where people's thought, ideas and inspiration will mix and create new things for example a painting with a mix of Indian and Islamic design. The blue space is for adults, the green is for kids and they are both designed the same, but the kids area is a mini design of the adults area, so the kids will see adults and their role model while the adults will see in the kids the future.
- The white space is for people who are interested more on art and want to see the process of a working artist, or for parents they can enjoy their meal and at the same time have an eye on their children in the studio space.
- The purple space is a quiet area for business meetings or for sketches and brainstorming and it can be for artists who are seeking for inspiration. This space can be used for therapy sessions as well since it is semi-private even the sittings inside are semi-private.
- The pink space is the café back of house and the cashier. Part of the back of house is in glass so people will see how their food is cooked.



CIRCULATION DIAGRAM



SOUND DIAGRAM

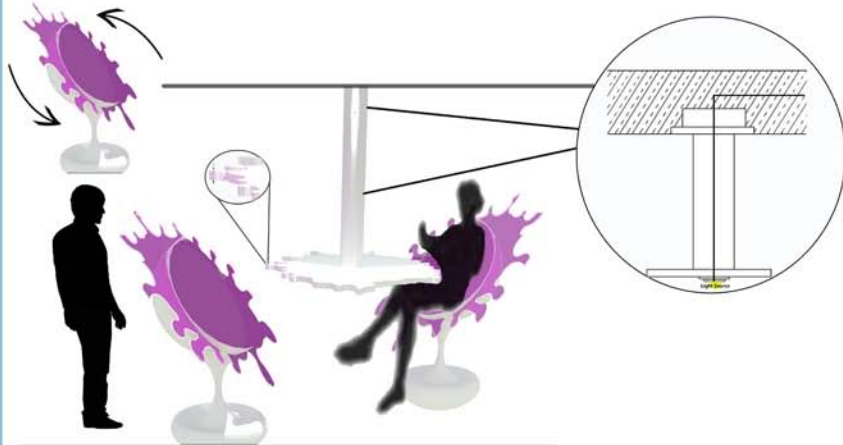


LIGHT DIAGRAM



# MORE THAN ART CAFE

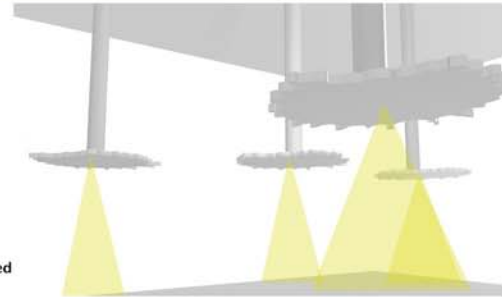
MIDDLE SITTING SPACE



**MATERIALS**  
The steel will be for the chairs and the object that holds the tables that will be MDF.



Placing light element under the table will give a nice dramatic effect on the floor and instead of adding patterns or colors the shadow of the tables "paint splash" will create the pattern without making crowded flooring, so it will be more simpler but at the same time apply the concept and effect.



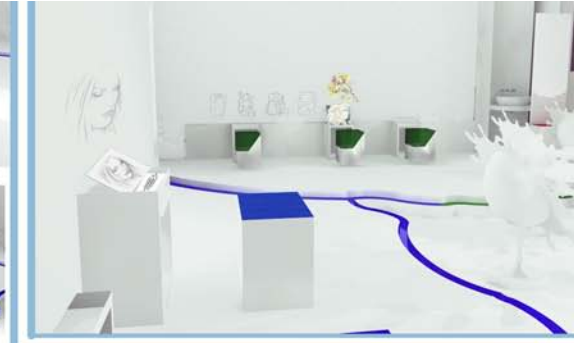
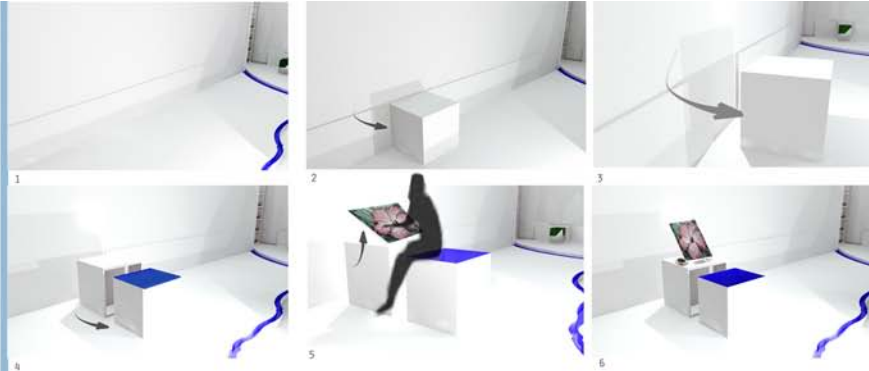
Inspiration of the tables and chairs, and how i applied the effect of the paint splash



MORE THAN ART CAFE  
MORE THAN ART CAFE  
MORE THAN ART CAFE  
MORE THAN ART CAFE



# STUDIO SPACE



Smart walls and furniture creates more space, and I used the upper wall for storage as well. All the furniture in my café is flexible because the users have different needs and everyone has his own way of working. People can paint facing the wall or face the middle space of the café.

## MATERIALS

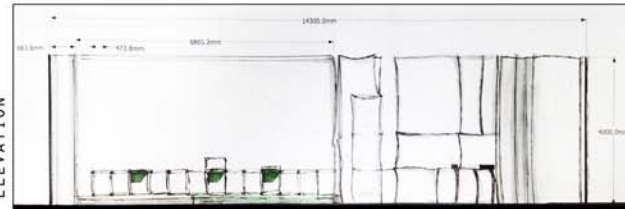
The wall is painted with white board paint, because I want people to draw or sketch their ideas and thoughts before they start their paintings, since no one can start painting without brainstorming or sketching. The big wall will give them more space and will feel free to go wide and give them the chance to experience the street art as well. Every week a photograph will be taken of the wall as a record and then wash it so more people will fill it again.

Whiteboard - dry - erase - paint



The smart walls is Useful for small spaces since it can be multi-functional. For example, it can be an open studio and if all the furniture are inside the wall it can be a whole wall, for exhibiting or storage.

ELEVATION



The table and body of the stool are mdf but the seat part is leather.

Leather



mdf laminated white



MORE THAN ART CAFE  
MORE THAN ART CAFE  
MORE THAN ART CAFE

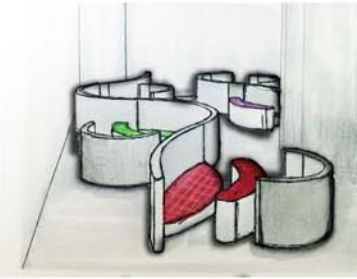


# MORE THAN ART CAFE

QUIET SPACE

The purpose of the space is for business meetings, therapy sessions or sketching.

The sitting inside creates a private area for each sitting since the backrest is 1000 mm that separates one seat from the other. The concept of the chairs is white canvas, as a new beginning or a fresh start.

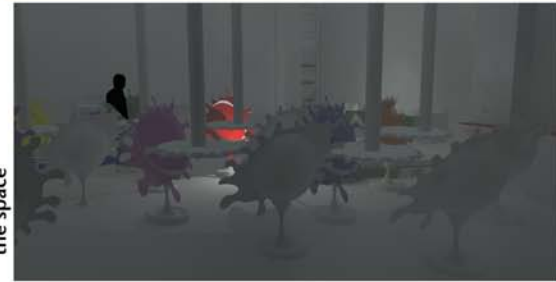


Elevation 1

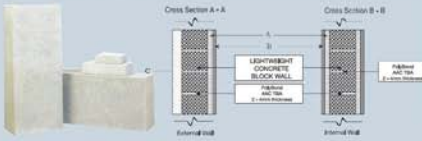


I will include art therapy in my café in an indirect way so people will feel more comfortable with the therapy fact. So I will place an undercover therapist to analyze people's work and talk to them randomly as if they are strangers who liked their paintings and want to talk about it only, because some people don't accept therapy directly.

Perspective from inside the space



MATERIALS



Lightweight Concrete is for the entrance exhibition

white matte polished concrete for the floors so the shadow reflection of the furniture will give more dramatic effect.

Flexible glass is for the partition between the quiet area and the rest of the café.



I used the steal for the body of the chair and used for the seats so it looks more like a real canvas and feel the canvas's texture as well.

STEAL



Elevation 2



MORE THAN ART CAFE  
MORE THAN ART CAFE  
MORE THAN ART CAFE



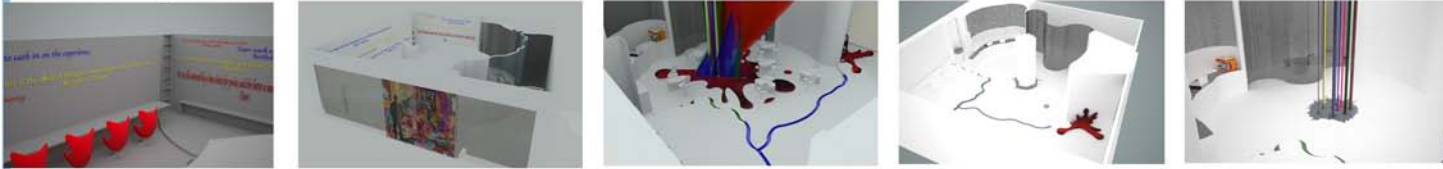
PERSPECTIVES AND MODEL



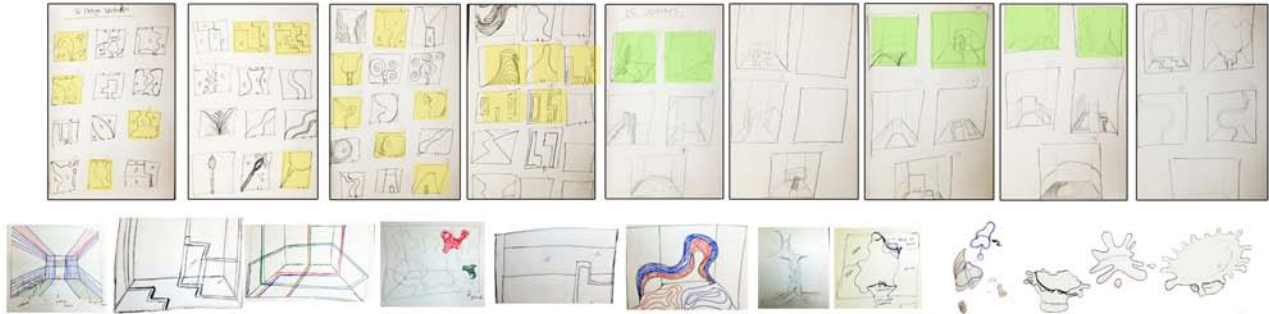
# MORE THAN ART CAFE

PROCESS AND DEVELOPMENT

## Design Development



## Sketches



## Models and Experiments







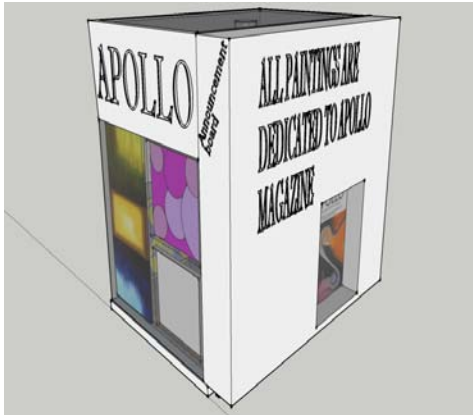


# Social Designs

# Apollo Magazine Kiosk Design

## Design Proposal:

We were supposed to do a Kiosk design for a magazine that will be placed outside. The Magazine i choose was Apollo magazine.



Apollo magazine is a magazine that collects and appreciates worldwide art. My kiosk concept is more like an exhibition, but not the normal exhibitions were the visitors are the viewers only; my kiosk will be like a small workshop were the visitors will be the artists and painters, for people who like to paint or people who wants to try. The kiosk will provide the visitors with all the materials like canvases, paints and brushes.

The idea of the magazine collecting paintings from the entire world inspired me to do a small workshop that looks like an exhibition. Since Dubai has variety of nationalities so in this case the paintings will be worldwide too, since all nationalities will create the painting and some will finish others paintings as well and this will make the painting itself worldwide.



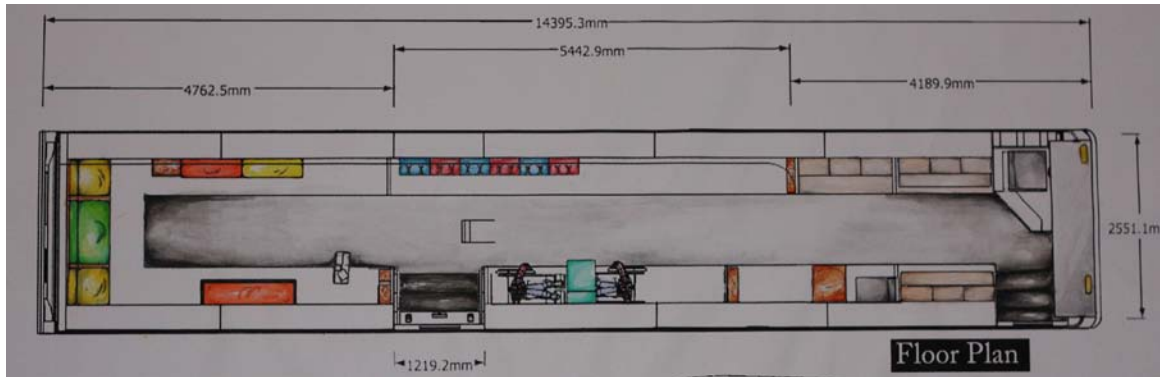
The theme of my kiosk is putting all paintings in a glass box to protect the paintings as if they are a treasure and people can see it from outside without touching it or destroying it, and they can have a nice attractive look since the glass on top will give a nice glossy appearance. Even though the paintings are protected with glass there is an opening for people to go in and paint on the canvases or glass hanged on the walls.

# Educational Bus For Down Syndrom Children

Designed an educational bus for Down's Syndrome children, in which they will learn the alphabetics, colors and shapes. The bus is designed to fulfill their needs.



Perspective



Floor Plan



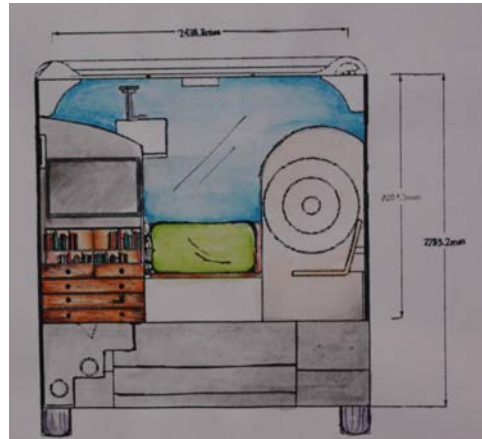
Side Elevation



Detail Elevation



Front View



Back View



Perspective View 1



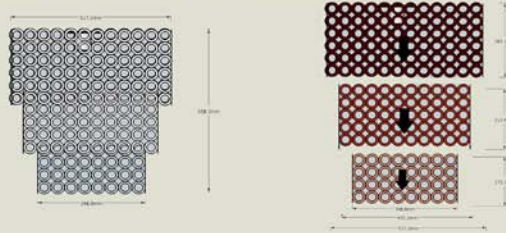
Perspective View 2

# Bottle Cap Chandelier

## BOTTLE CAP CHANDELIER

ONE MAN'S TRASH IS ANOTHER MAN'S RECYCLED ART

### BOTTLE CAP CHANDELIER DIMENSIONS

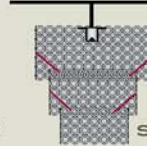


PERSPECTIVE  
MODULAR CONNECTION



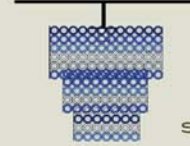
SCALE 1:10

SECTION  
PRESENTING INNER CONNECTION

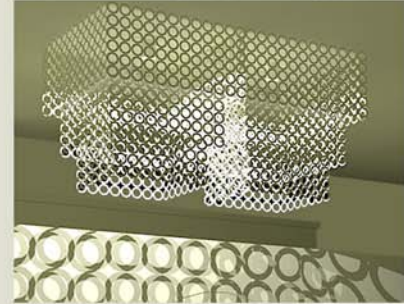


SCALE 1:10

ELEVATION



SCALE 1:10





# THE INSPIRATION

OUR INSPIRATION IS THE CHANDELIER. USUALLY CHANDELIERS ARE MADE OF CRYSTALS BUT IN OUR DESIGN WE WILL BE USING MELTED BOTTLE CAPS TO SHOW THAT RECYCLED MATERIALS COULD BE PRESENTED AS BEAUTIFUL PIECE OF FURNITURE



## STEPS TO CREATE THE BOTTLE CAP SQUARE SHEET

### HOW IT WILL BE DESIGNED

THE CHANDELIER WILL BE DESIGNED IN A WAY THAT IT WILL FULFILL MORE THAN ONE TASK. IT COULD BE USED AS A LIGHT SOURCE OR A DECORATIVE ELEMENT. THE WAY IT WILL BE CREATED ALLOWS FLEXIBILITY TO CHANGE ITS FORM. IT WILL BE A SQUARE SHAPE MELTED BOTTLE CAPS AND ITS REPETITION COULD FORM DIFFERENT OBJECTS



### OTHER WAYS IT COULD BE USED

#### PLACEMAT



#### ROOM DIVIDER



#### CARPET



#### TILES

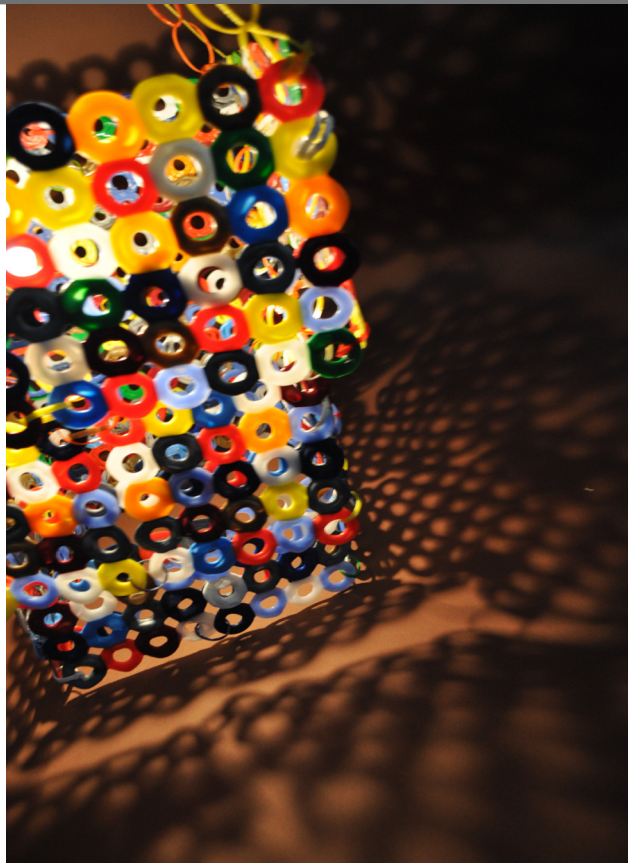


### DIFFERENT COLOR COMBINATIONS COULD BE USED

- STEP 1 COVER THE COOKING TRAY WITH ALUMINUM
- STEP 2 REMOVE THE LOWER PART OF THE BOTTLE CAP KEEP FOR CONNECTION
- STEP 3 ARRANGE THE BOTTLE CAPS IN THE TRAY
- STEP 4 PLACE THE TRAY IN THE ELECTRIC OVEN
- STEP 5 AFTER ONE MINUTE REMOVE FROM THE OVEN
- STEP 6 REMOVE THE ALUMINUM WHEN THE BOTTLE CAPS GETS WARM
- STEP 7 PLACE A HEAVY FLAT OBJECT ON THE MELTED BOTTLE CAPS TO MAKE SURE THE EDGES WON'T FOLD

# Bottle Cap Chandeler

Social Designs



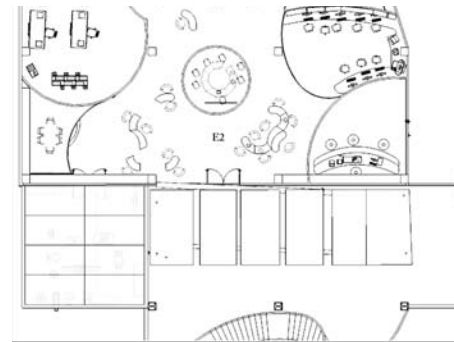
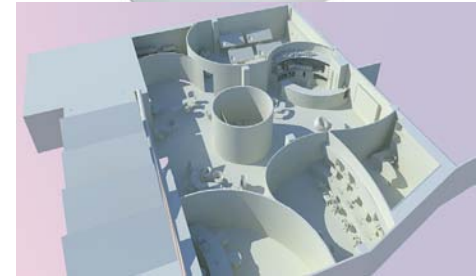


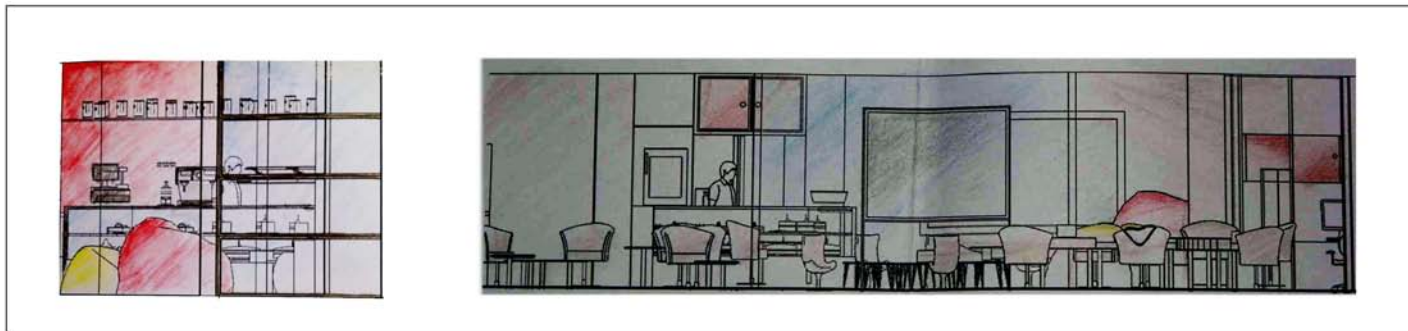
**Picture of the actual chandelier**

# Afkar Student Lounge

**This project was about designing a student lounge for students majoring in Arts and Design colleges, professionals, and artists. We were supposed to be a team of three students designing this lounge together. After looking at the outlet mall and the space that was given to us, we had to research about the outlet mall and different student lounges such as the Pavilion and Shelter.**

**Our design was based on a concept in which we got inspired by the huge ecological footprint of the UAE and how much waste is produced. As designers, we feel that we are obliged to find solutions to cut off our negative impact on the environment. Basically, our concept is the movement of people who visit the Outlet, and how they circulate around the mall. Our concept is designed in a way that we used environmental friendly materials such as the solar panels, as a ceiling for the outer workshop and shades for the outer seating area, that use the energy from sunlight to provide the lounge with electricity. Also, the structure of the walls is organic in shape in which the members of the lounge can relate to the environment as well. The movement in our concept is inspired by how things move around us and how the environment changes**

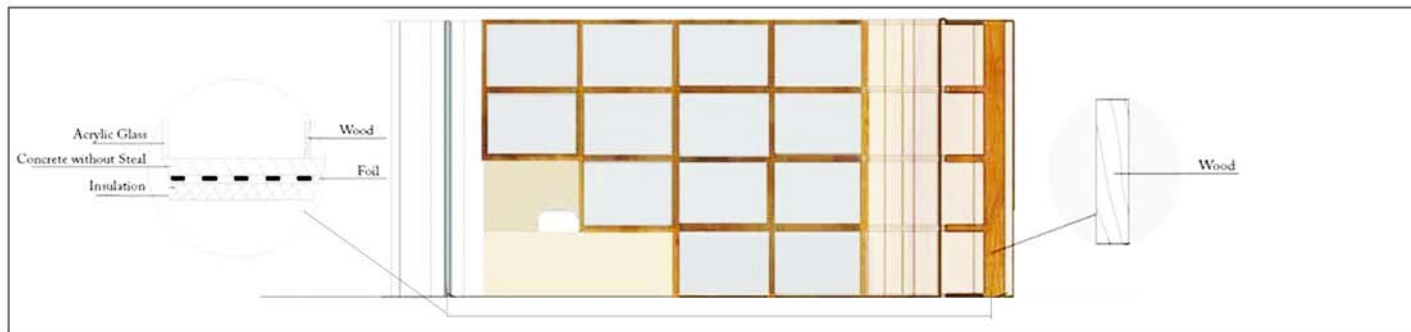




Bar E1

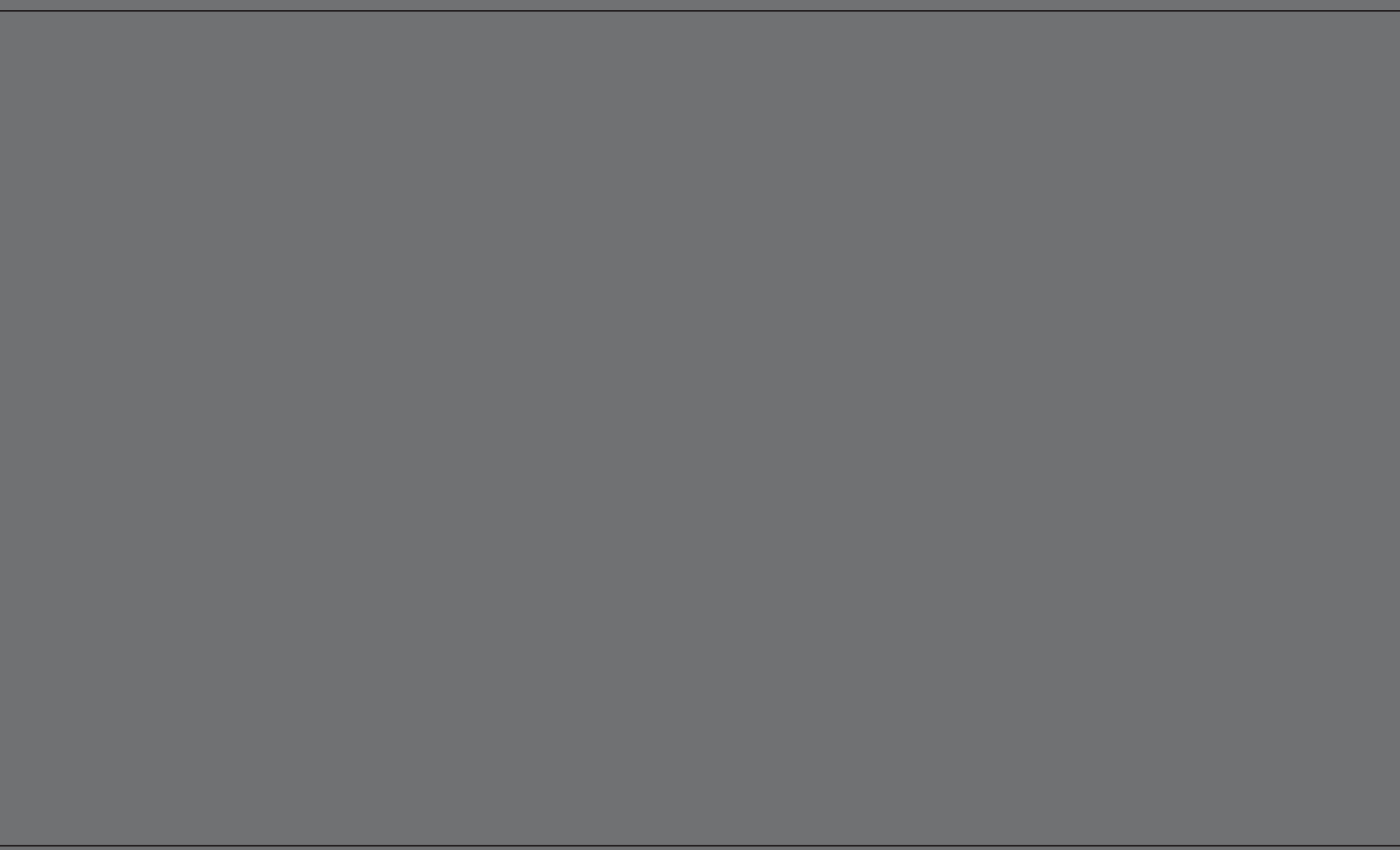
Sitting Area/ Opened Area E2

Section Scale 1:50



Stationary S1

Section Scale 1:50



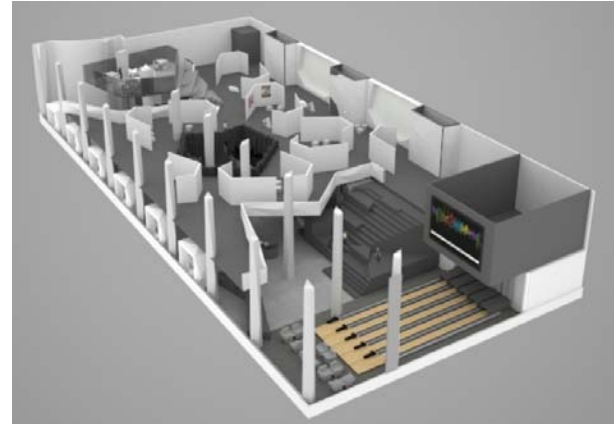
# Residential Designs

# The Hub

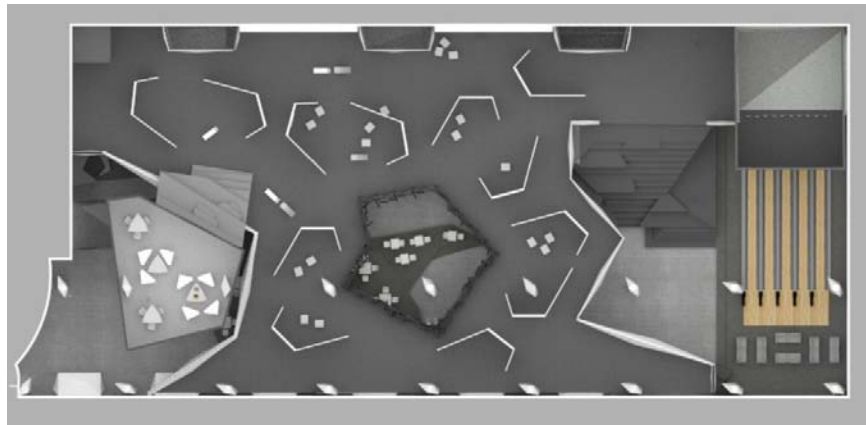
## Residential Designs

### Design Brief

**The Creative Hub is a space that breaks the user free of all outside connections. Its design is rebellious compared to the rest of the surrounding rooms and interiors. It encourages patrons to think outside the box and it gives them exposure to a new environment, different than what they are used to.**



Perspective View



Floor Plan



Those are the pictures of the actual space. It is in Zayed University above the Cafeteria.

The concept of the space is Deconstructivism.

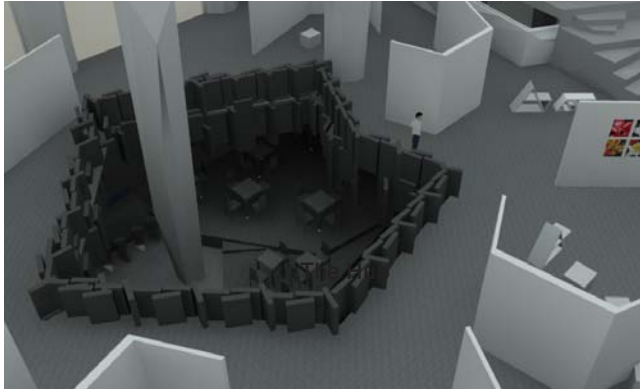
Deconstructivism tends to produce a sense of dislocation both within the forms of projects and between the forms and their contexts. By breaking continuity, disturbing relationships between interior and exterior, fracturing connections between exterior and context, Deconstructivism undermines conventional notions of harmony, unity, and apparent stability.

(JAMES STEVENS CURL, 2000)

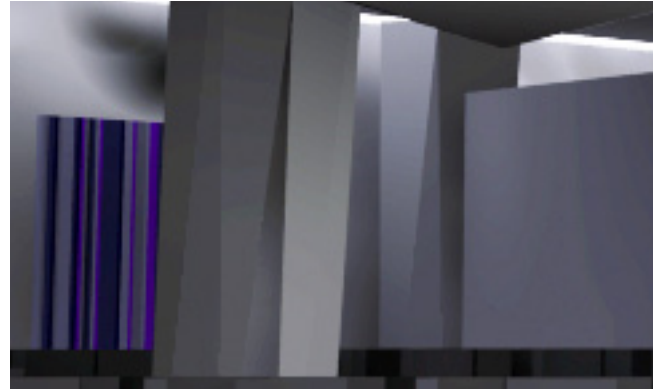


# The Hub

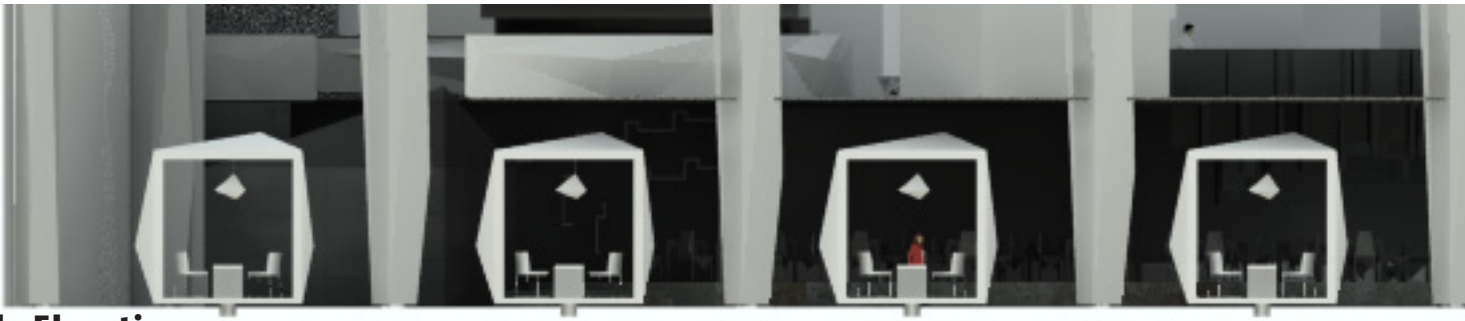
## Residential Designs



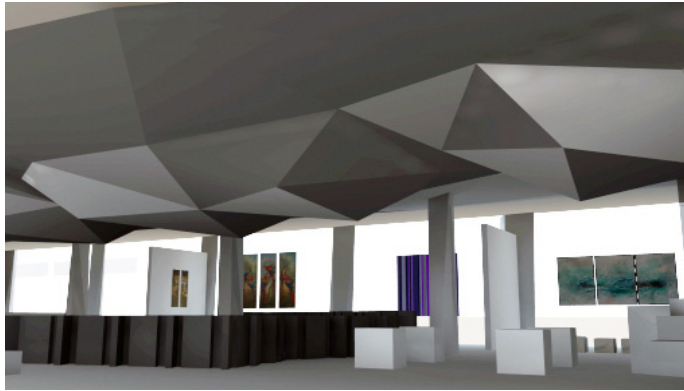
**Perspective View 1**



**Perspective View 2**



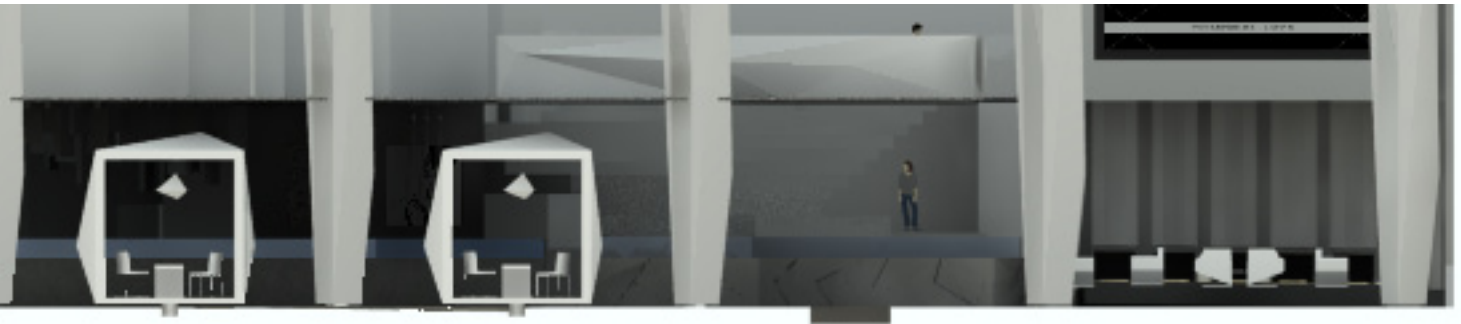
**Side Elevation**



**Perspective View 3**



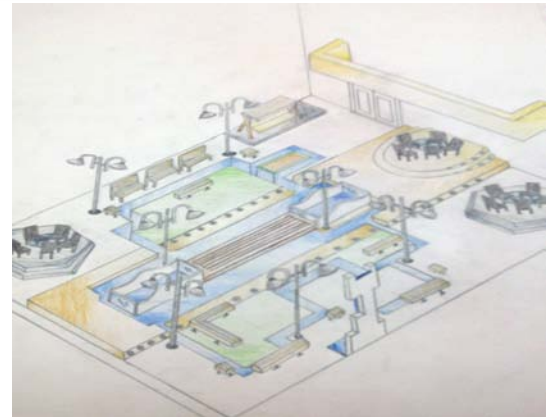
**Perspective View 4**



# Garden Design

## Residential Designs

In the garden that we are supposed to design, our aim and goal is to design a garden that is relaxing and joyful for people who live in the building. Our theme is basically the combination of Persian gardens, containing long ponds with the Indian outdoor Gazebo. Basically, the pond is located in the center of the garden, having an open pond with fish inside. At the two sides of the open pond, people will be able to walk over an enclosed pond. This closed pond has glass on top where people can walk and look down at the fish. There will also be small, continuous channels of the pond surrounding the long centered pond. Beside this channel there are benches and chairs for people to sit on to enjoy the view of the fish inside the water. The channels will also be covered with glass, so it would be safer for people to walk around without having to watch where they step every while. In the middle of the long pond, there will be a long wide bench for people to sit on to enjoy the view of the fish and the garden, and both sides of the bench will be closed by transparent glass.



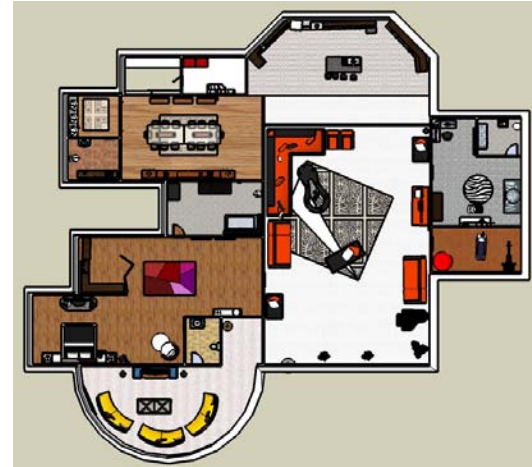


# Villa Design with AutoCAD and Sketchup

## Residential Designs

### Design Brief

We were supposed to draw our room in sketchup and do each furniture piece in sketchup with the use of the components



Floor Plan



Axonometric

Living Room



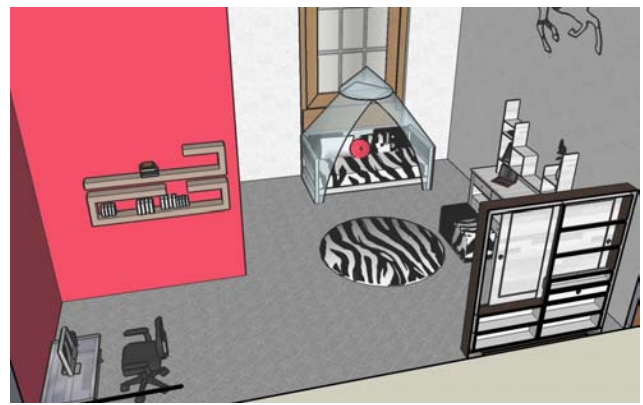
Kitchen



Dining



Guest Room

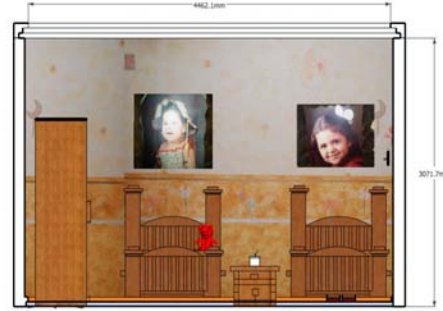


# My Room Design

## Residential Designs

### Design Brief

We were supposed to draw our room in sketchup, and it was my first try in Sketchup.



Back View



Perspective view 1



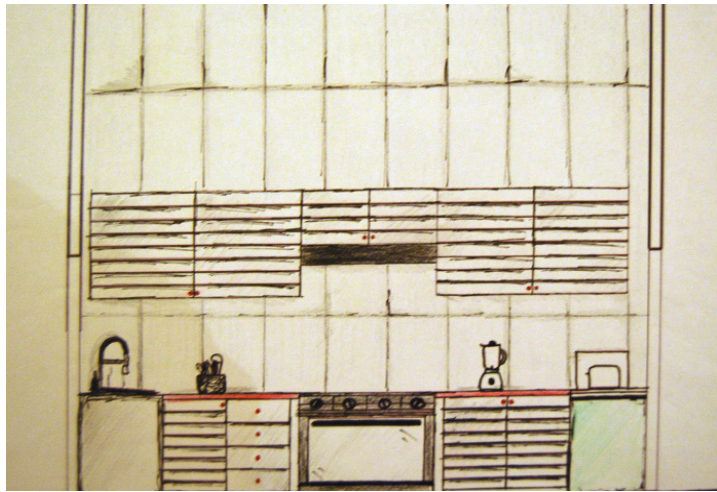


# Kitchen Light Study

**Did some sketches to study the light of the kitchen, so i can understand the relationship between color and light. Did the render by hand**



**Picture of the kitchen**



**Side Elevation**

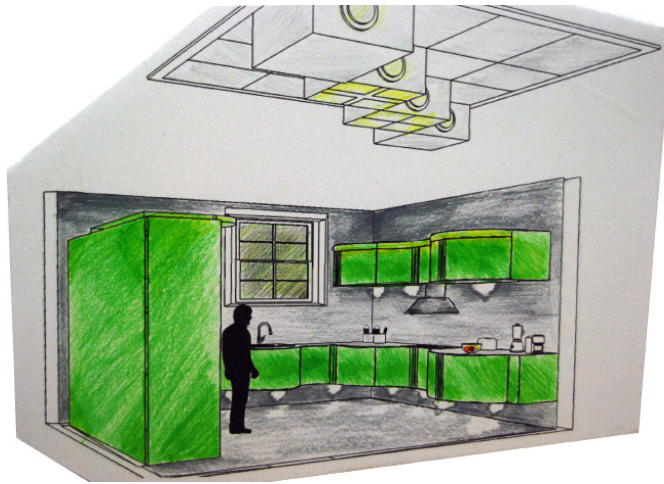


**Perspective View**

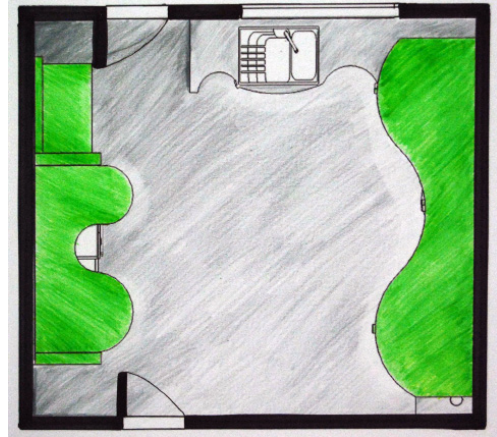
# Kitchen Redesign

## Residential Designs

After studying the light and the kitchen, I redesigned the kitchen based on that study, and tried to avoid the old mistakes.



**Axonometric**



**Floor Plan**



**Experiment Model**

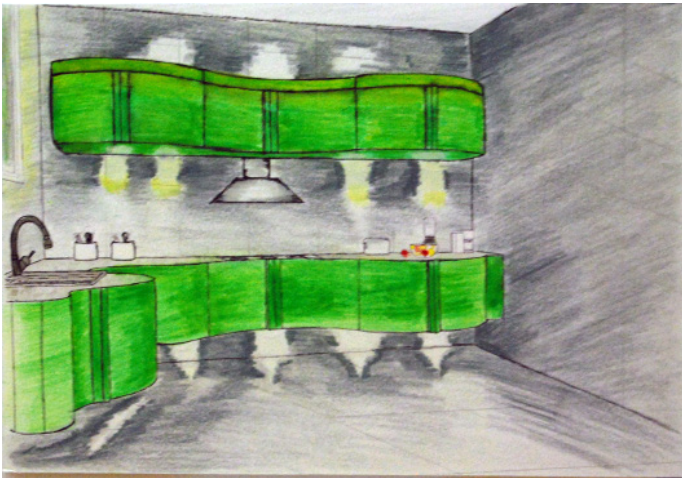
Front View / Natural Day Light



Left View / Lights on



Perspective View 2 / Light on



Perspective View 1 / Natural light

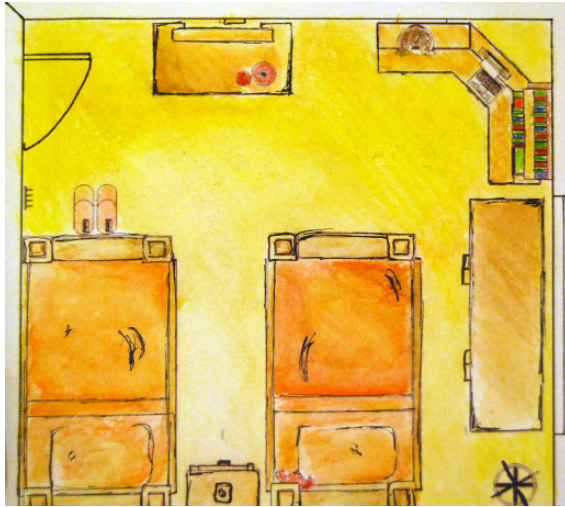


# Room Light Study

## Residential Designs

**Did some sketches to study the light of my room, so i can understand the relationship between color and light. Did the render by hand**

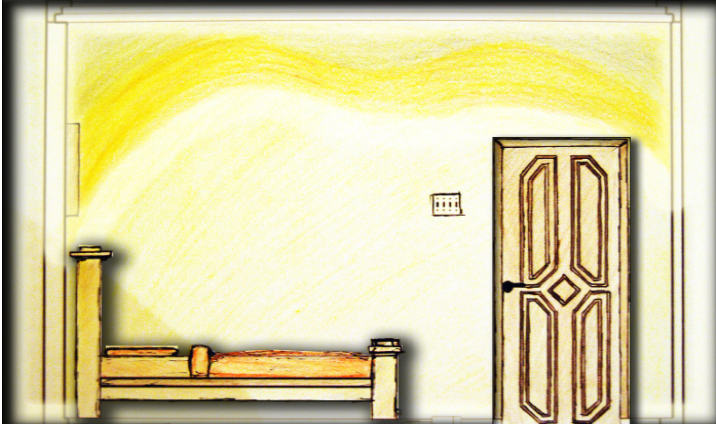
**Floor Plan**



**Pictures of the Room**



Side View 2 / Natural Day Light



Side View 1 / Natural Day Light



Residential Designs

Perspective View 2







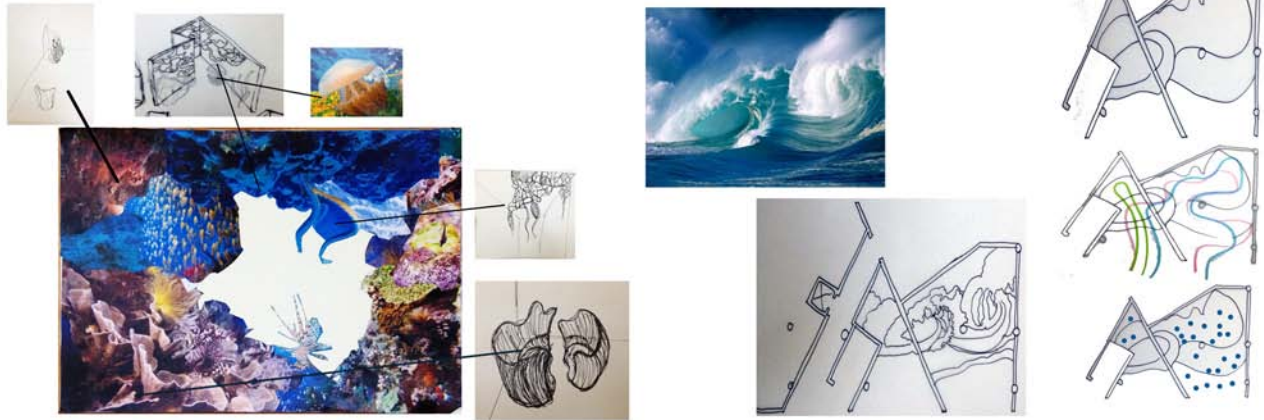
# Commercial Designs

# The Blue Waves

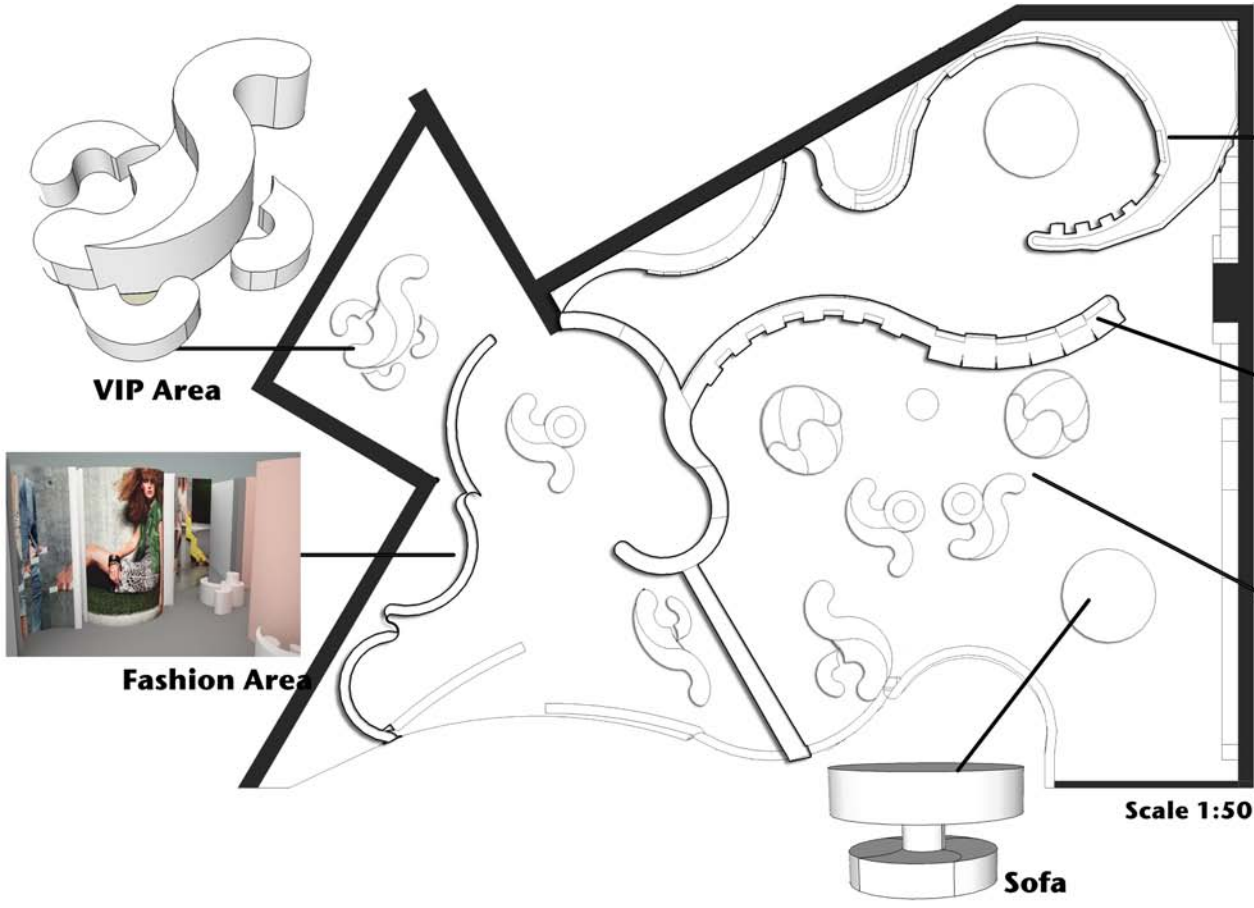
**Designing a store for Emirates Towers Boulevard Tiffany & o. Jewellery Store (Dubai).**

**The inspiration was from under the sea, the texture, shapes, and colors.**

**The floor plan came form this wave image, but changed some of the edges so it will be more functional to use and to be more realistic.**



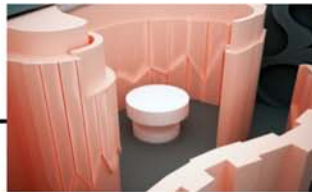
**Inspiration**



VIP Area



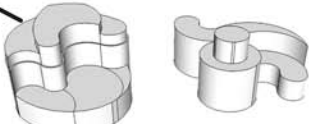
Fashion Area



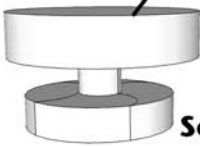
Designers Designs



Display Unit



Sofa Display Unit



Sofa

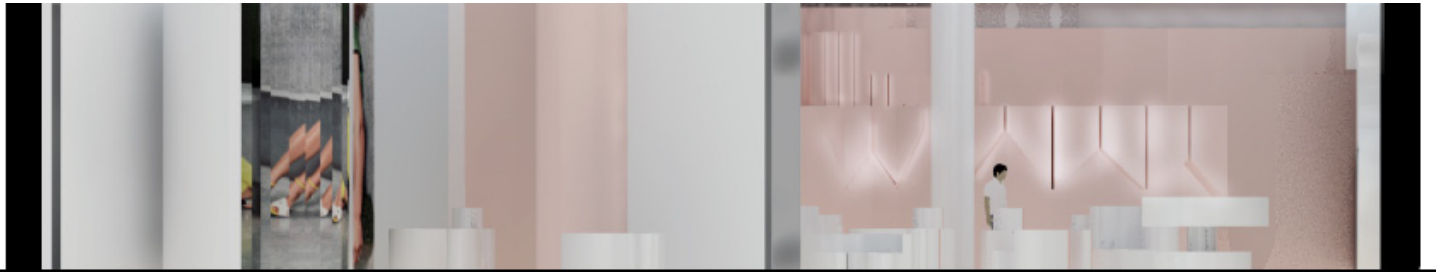
Scale 1:50

# The Blue Waves

## Commercial Designs



**axonometric**



**Interior Elevation**



**Exterior Elevation**

# The Blue Waves

Commercial  
Designs

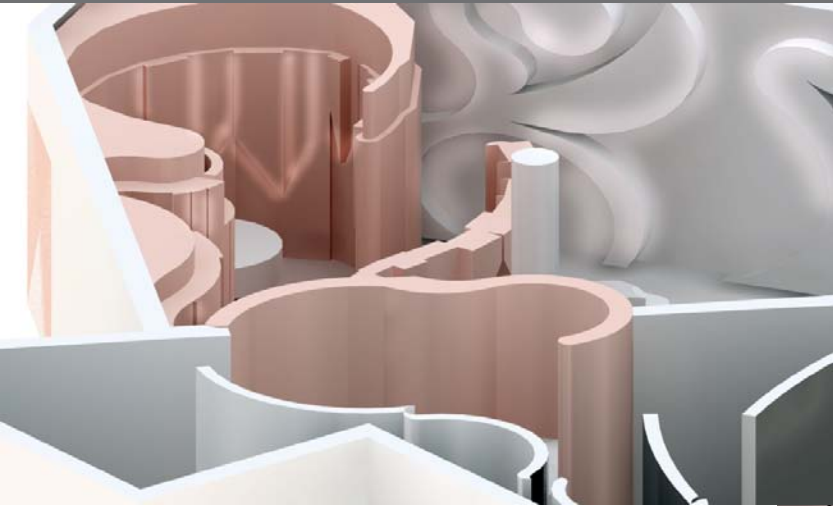


Perspectives

Display Area



Fashion Area



**Designers Display Area**



**Designers Display Area**



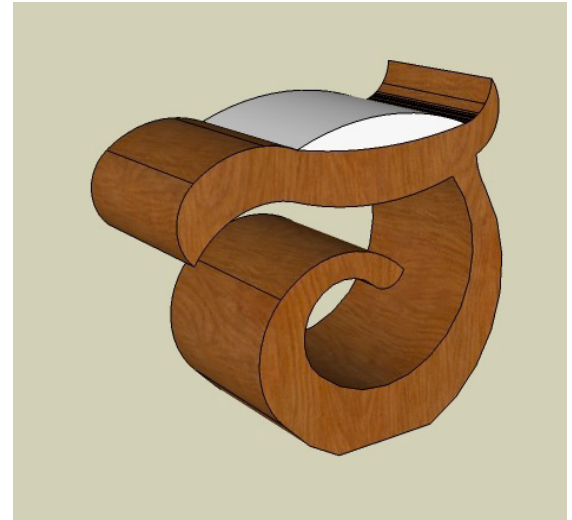




# Furniture Design

## “Ha’a” Stool

**Designed a stool with my initial in Arabic. it is a stool, and it can be something that kids can enjoy and play with as well**

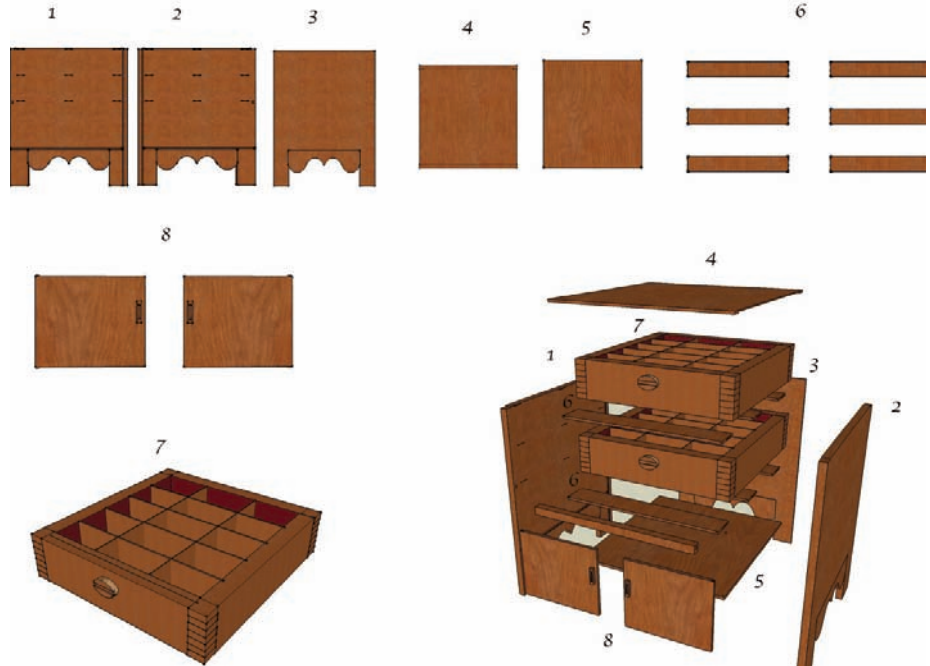


**Perspectives**

Designed my own jewelry box , and used different joints so i can learn them practically, and this is a manual of how to build the jewelry box



Perspective



Manual of the Jewelry Box



# Light Design

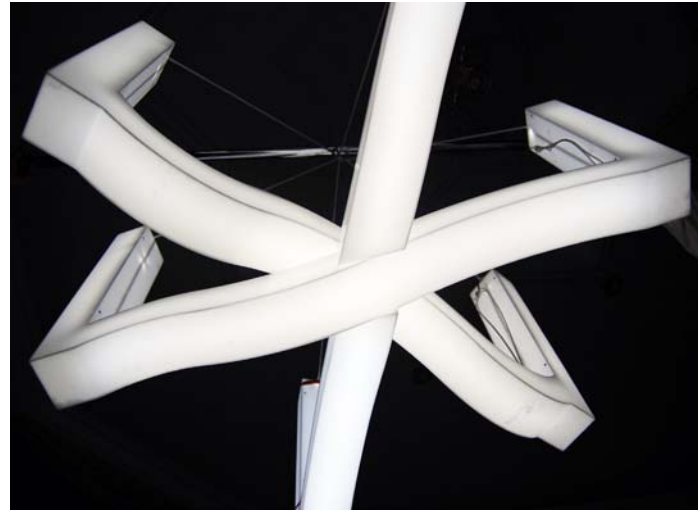
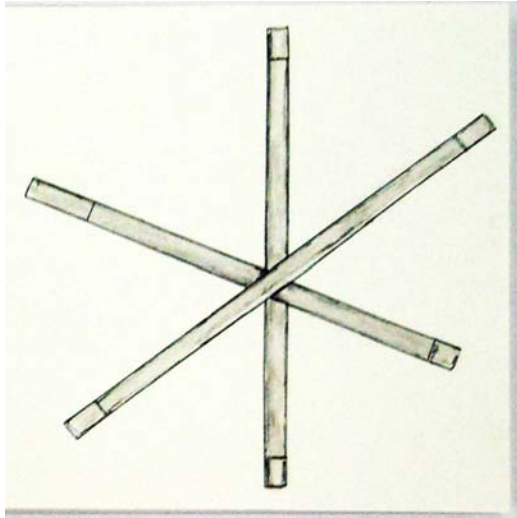
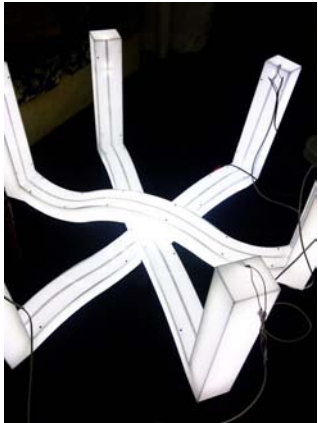
# The Dispersion Light

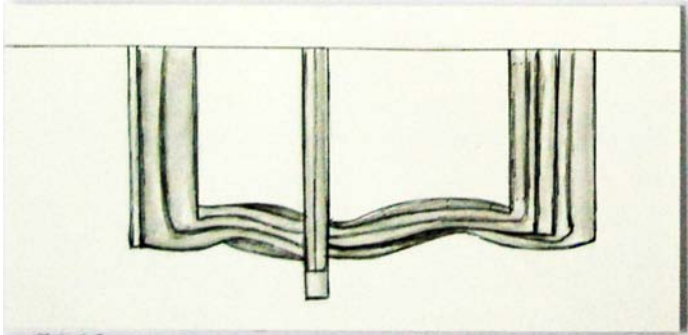
## Design Brief

In physics, a wave is a disorder that travels through space and time, usually attended by the transfer of energy.

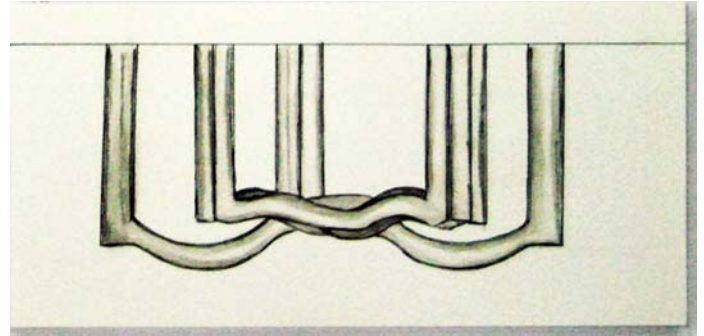
Waves travel and the wave motion transfers energy from one point to another, often with no stable displacement of the spots of the channel—that is, with little or no related mass transport.

I choose waves because first of all it represents nature in its shape and movement, and I saw that the transformer of light is slimmer to the motion of waves since the transformer transforms energy from one light to another. The layers in the design represents the deepest part of the ocean, even the waves itself are carried from different depths of the ocean, they clash one above the other. The layers of the acrylic have different curves since in nature nothing looks the same.

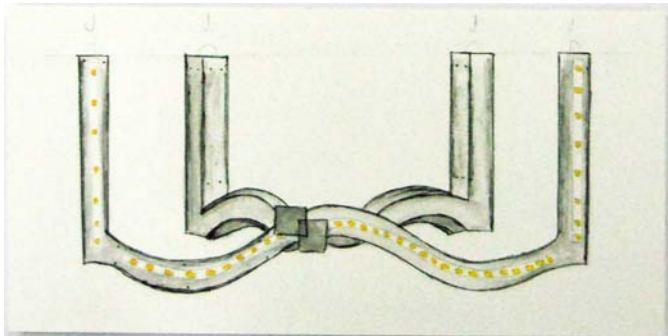




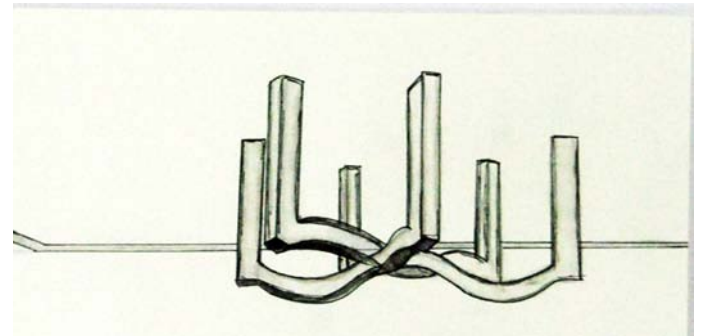
**Side View**



**Front View**



**Front Section**



**Perspective View**

# Floral Lamp

## Light Design

**Nature and the movement and shadow of the flowers was the inspiration of the floral lamp. It is hand made by cardboard.**

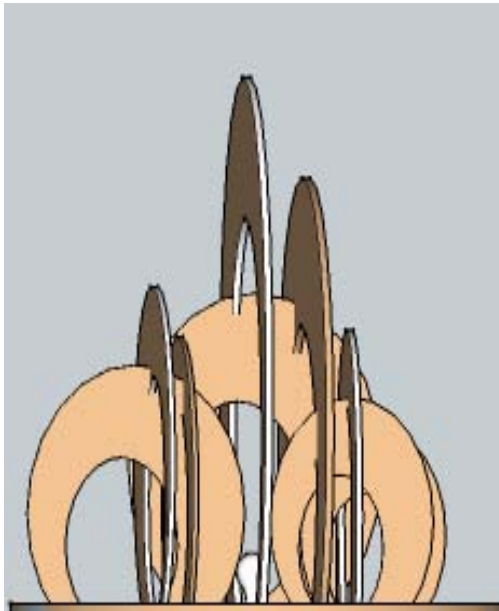




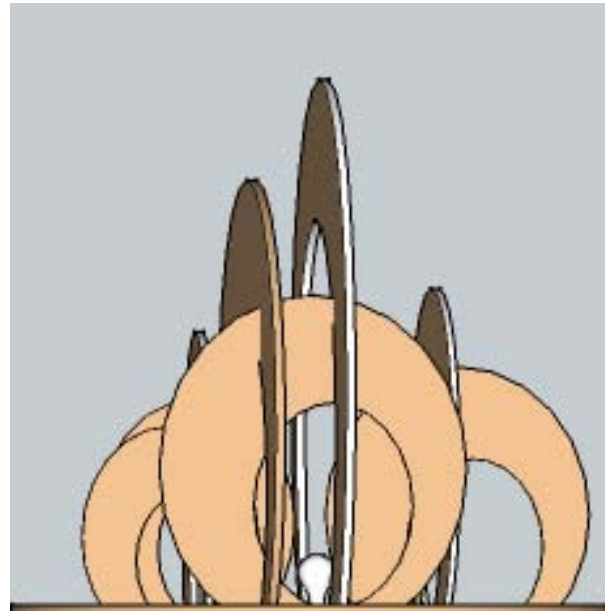


# Floral Lamp

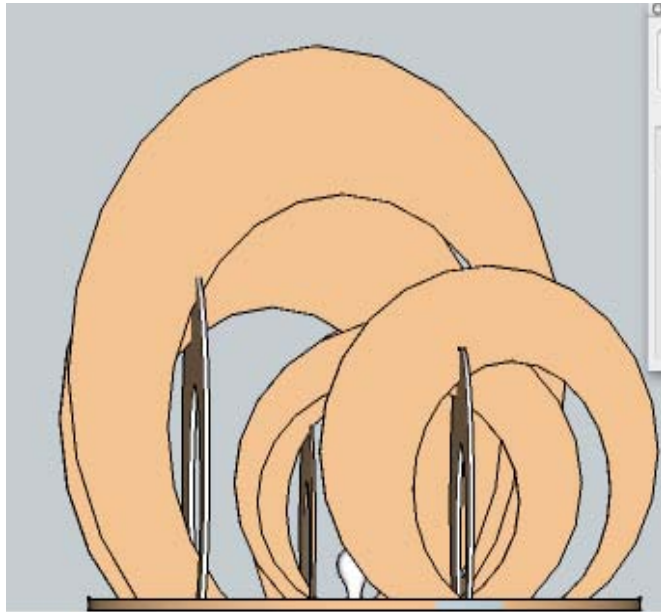
**Built using  
Sketchup**



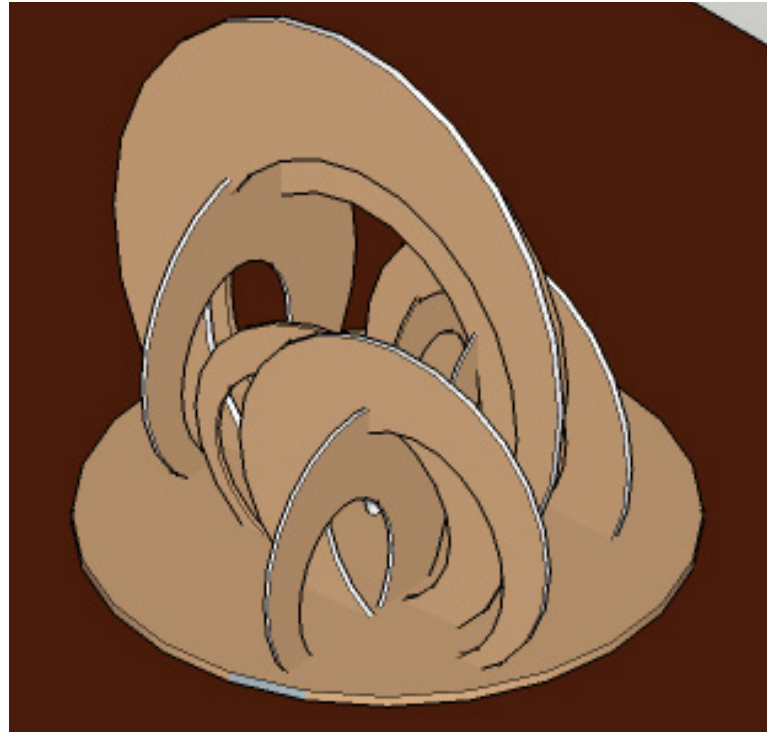
**Right View**



**Left View**



**Front View**



**Perspective View**



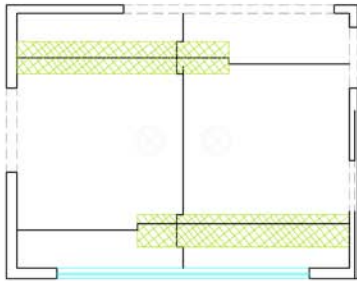
# Internship

# Dining in the Ground Floor of a Villa

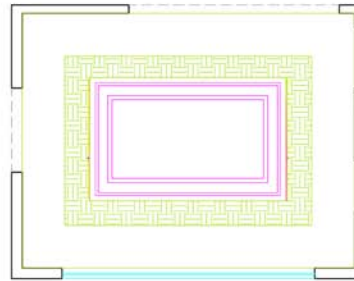
## First Project

**Design a house with a contemporary theme for the Ground floor as the client wants, and Classic for the Master Bedroom.**

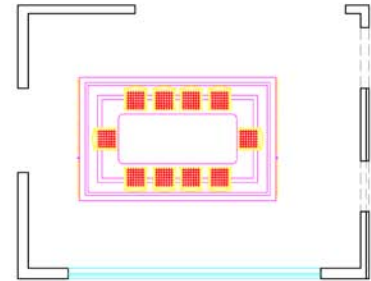
## Dining in AutoCAD:



DINING PLAN



FLOORING PLAN



FURNITURE PLAN

**In this project I experienced all the design programs, and I started the work step by step. In the beginning I started sketching my ideas with the information I got about the clients style, and then I did it on AutoCAD, then transferred the elevations into Photoshop colored it, and the last step was to draw and render it in 3D max.**



**one of the elevations colored with Photoshop**

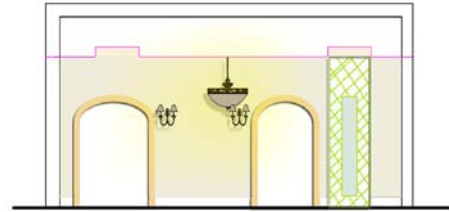


**Final 3D max Scene**

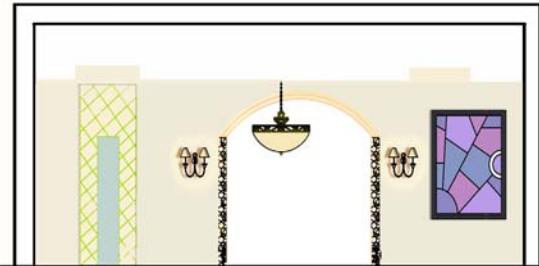
# Dining in the Ground Floor of a Villa

## Photoshoped the Dining:

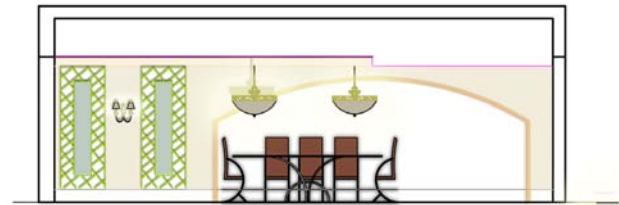
Colored the elevations, and added some shadows and light effects to make it look real.



elevation 2



elevation 3



elevation 4



# The process of the Dining using 3D max:

First Try



Second Try



Third Try



Fourth Try



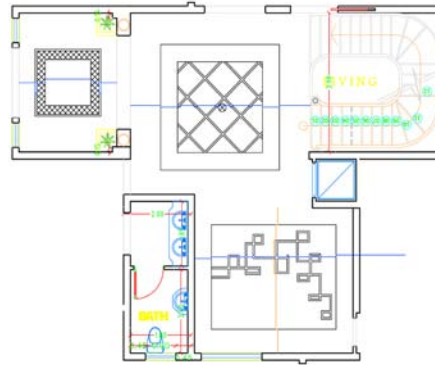
## **Project Two:**

**Designing the interior of a house, that contains a living room, dining, four bedrooms and a master bedroom in the roof of the house. The theme of the house is heavy contemporary theme.**

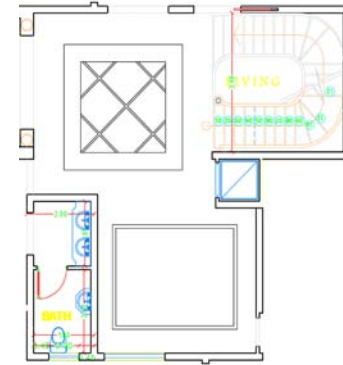


## Entrance and Dining in the Ground Floor:

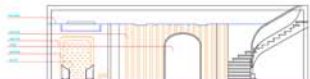
The style of the living room is contemporary as the request of the client for sure, in this space I played more with gypsum and mirrors to create effects on the wall.



ceiling plan



Flooring plan



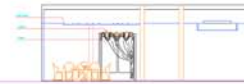
ELEV-D



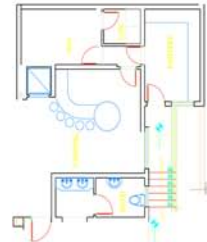
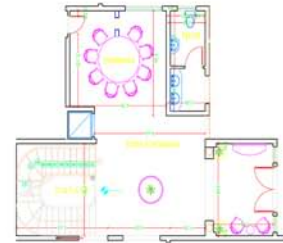
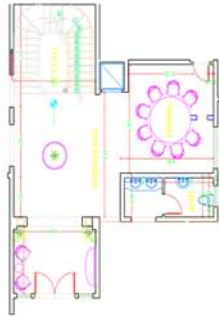
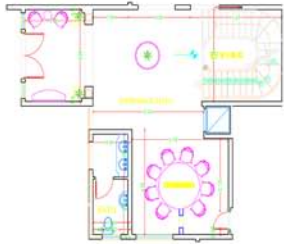
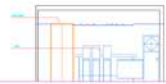
ELEV-C



ELEV-B



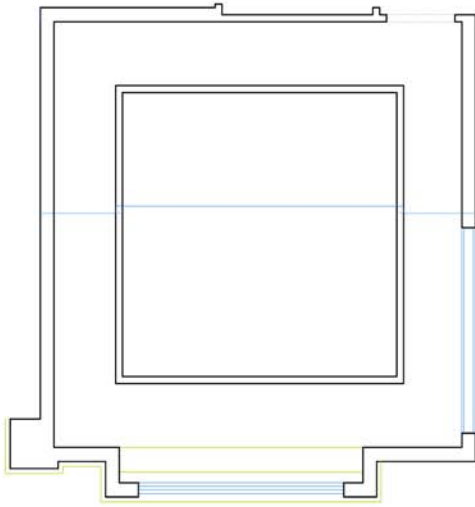
ELEV-A



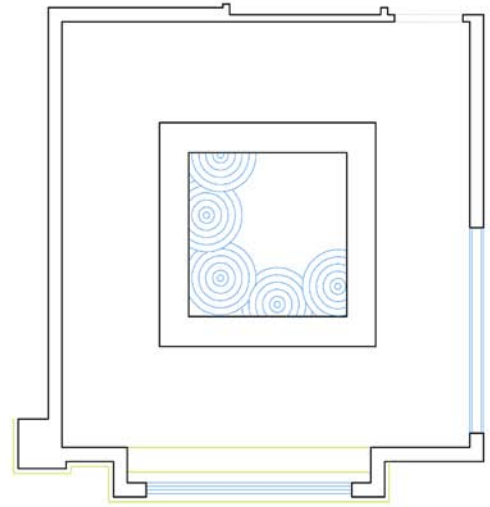
## Elevations

# Bedroom #1 in the First Floor:

I used geometric shapes in this room, Circles and Rectangles and added a touch of mirrors to make it more interesting and lively.



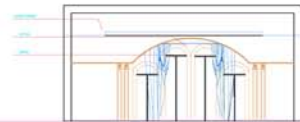
Ceiling plan



Flooring plan



ELEV -D



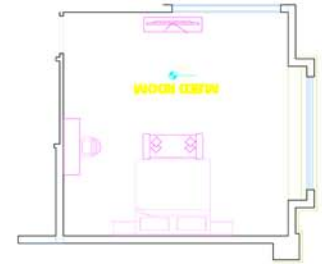
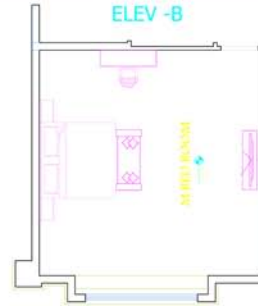
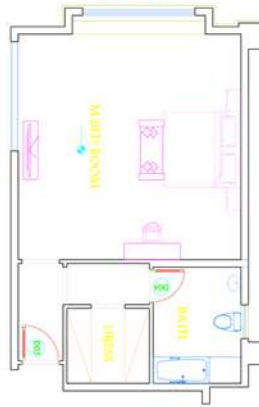
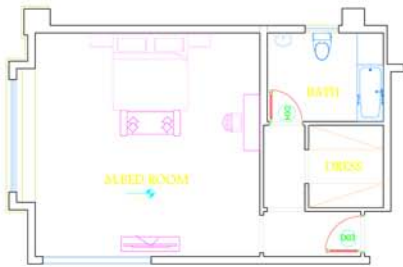
ELEV -C



ELEV -B



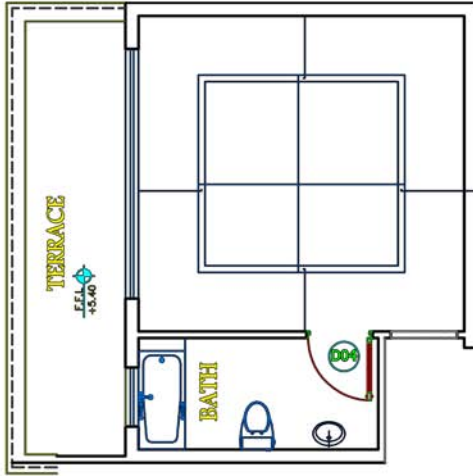
ELEV -A



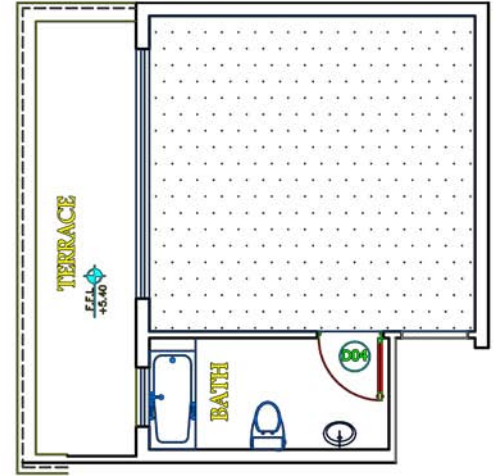
## Elevations

# Bedroom # 2 in the First Floor:

In this room i played more with the lines to create a pattern and added mirrors as well .



Ceiling plan



Flooring plan





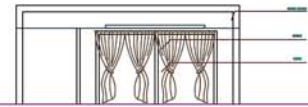
ELEV -D



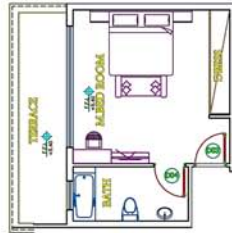
ELEV -C



ELEV -B



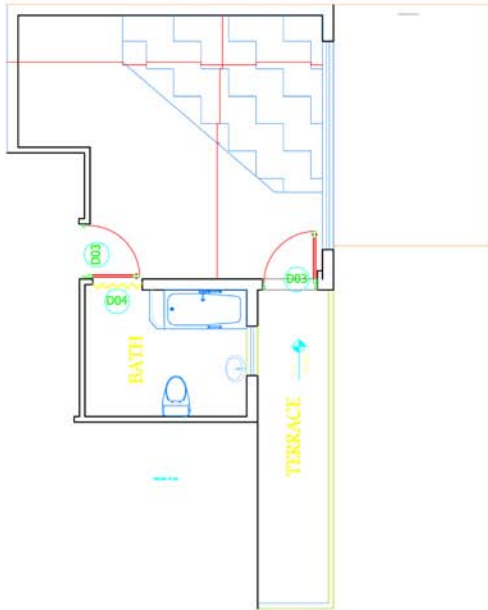
ELEV -A



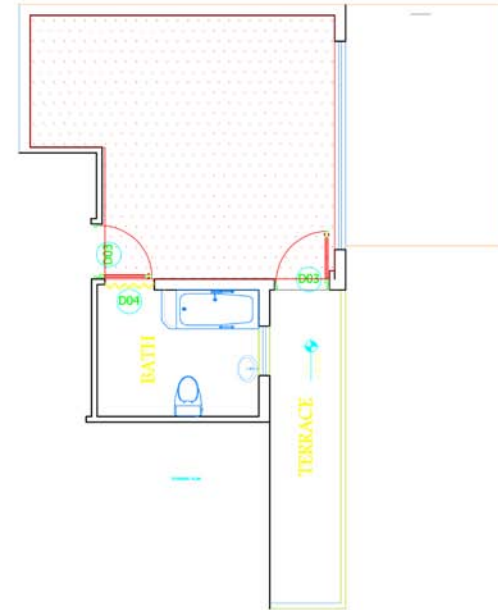
## Elevations

# Bedroom #3 in the First Floor:

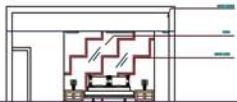
In this room i played more with the lines to create a pattern and added mirrors as well .



Ceiling plan



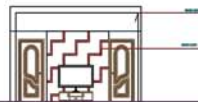
Flooring plan



ELEV-D



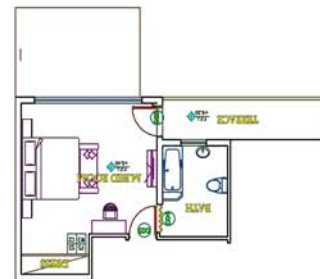
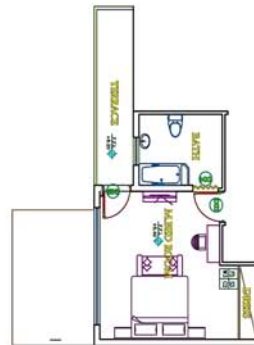
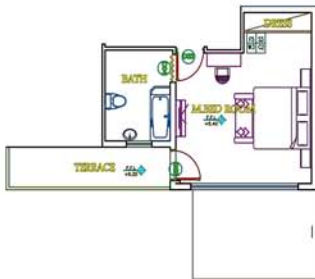
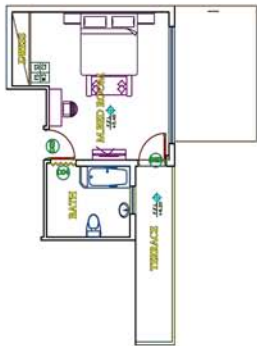
ELEV-C



ELEV-B



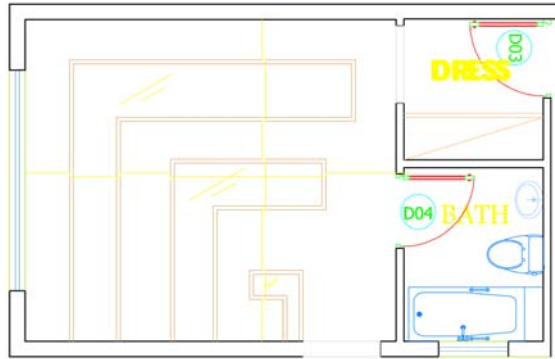
ELEV-A



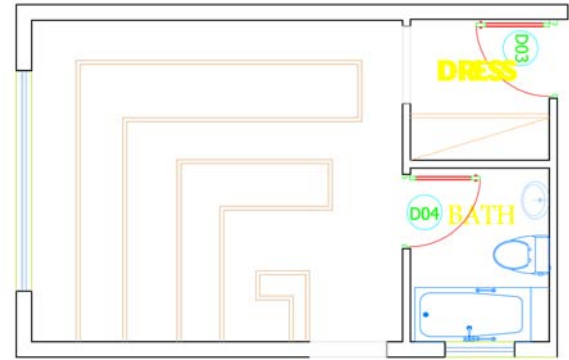
## Elevations

# Bedroom #4 in the First Floor:

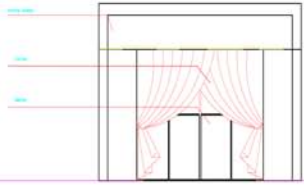
In this room i played more with the lines to create a pattern and added mirrors as well .



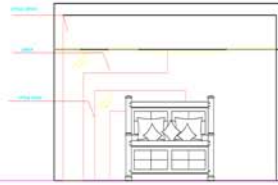
Ceiling Plan



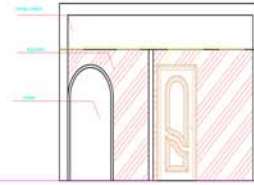
Flooring plan



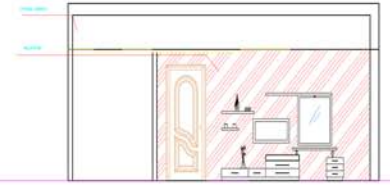
ELEV -D



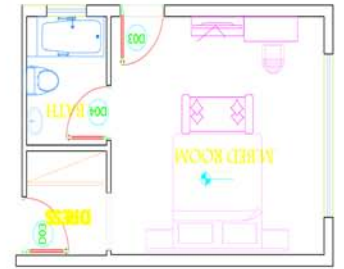
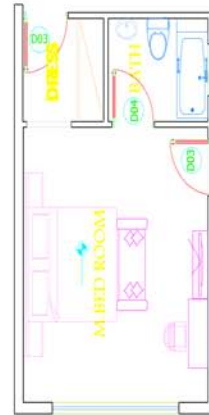
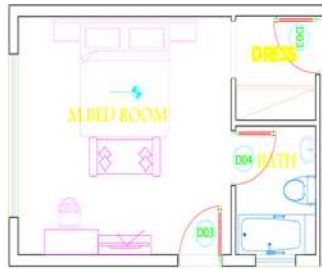
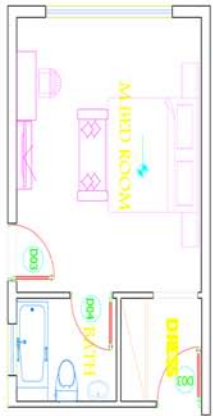
ELEV -C



ELEV -B



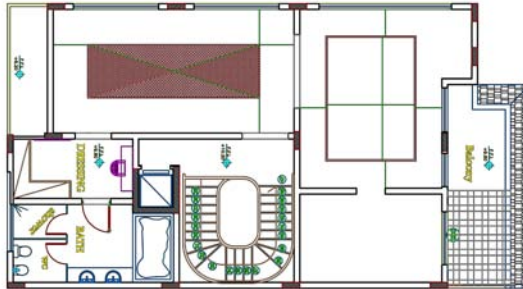
ELEV -A



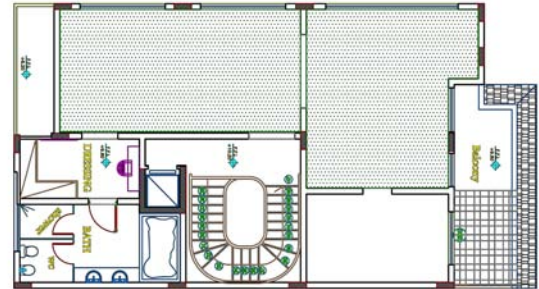
## Master Bedroom in the Roof:

The master bedroom was in the roof of the house, it contains a bedroom, sitting area and an office.

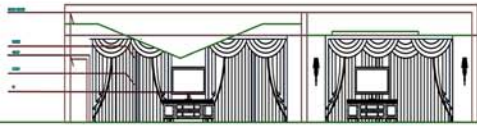
I designed the room in a contemporary style based on the request of the client. I added the crystal shape and form on the ceiling and walls. But I did the form of the crystal in 3D to shape a diamond shape and added Mosaic mirrors as well.



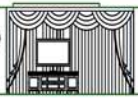
CEILING PLAN



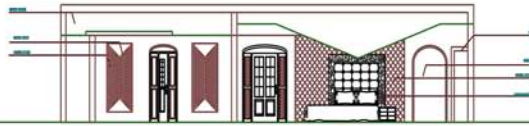
FLOORING PLAN



ELEV-E



ELEV-D



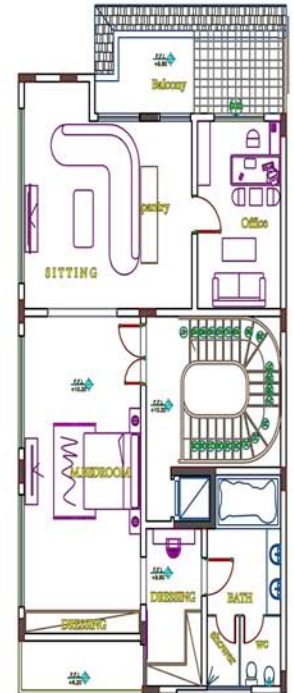
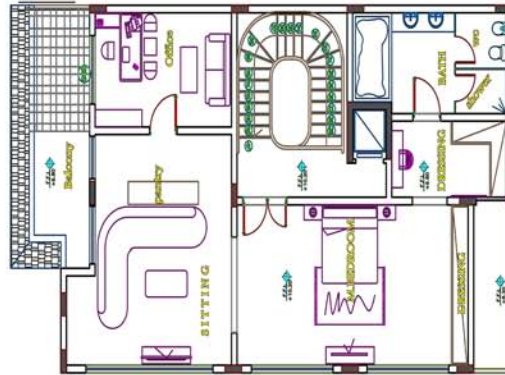
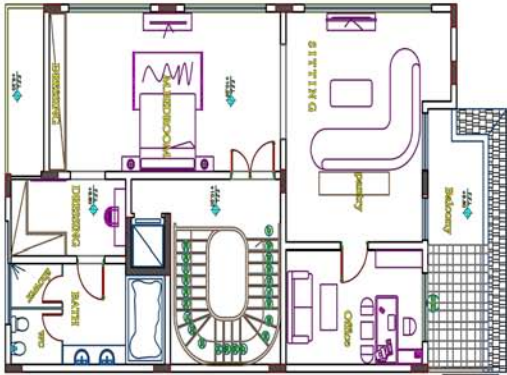
ELEV-C



ELEV-B



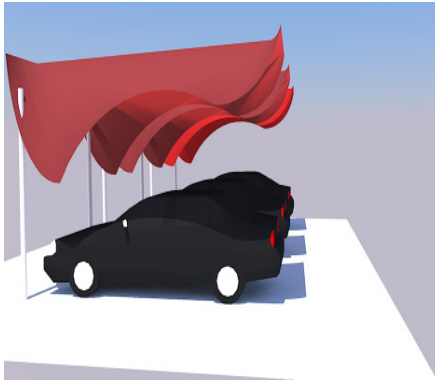
ELEV-A



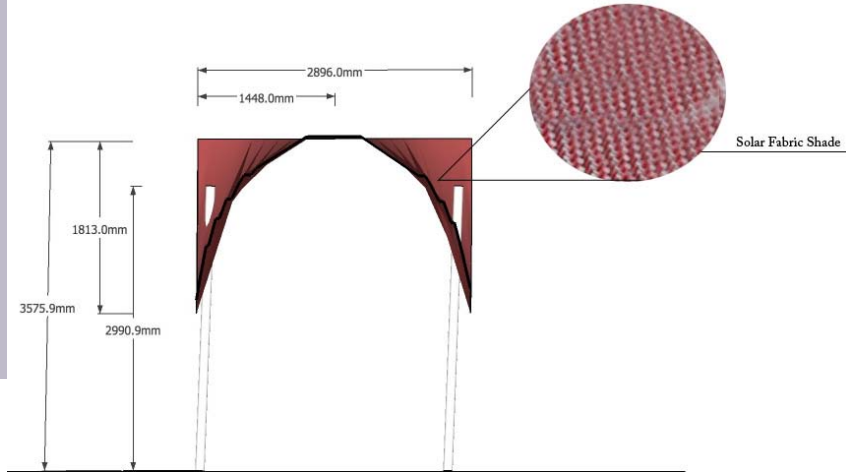
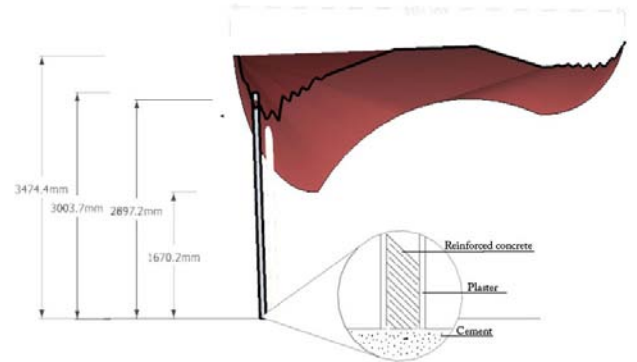
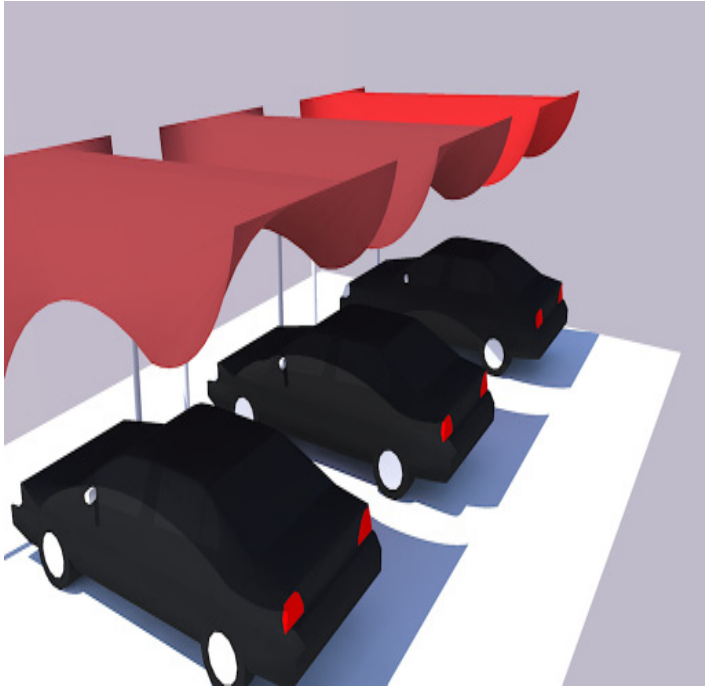
# Designing a Vehicle Parking Shade for Zayed University

## Design Breif

**we were asked to design a parking shades for the university. i choose my shade shapr base on the shadow and the sun direction. i wanted the shade to cover all the sides of the car as well so when the sun moves during the year, it wont hit the car.**









# Graphic Design

# Graphic Design

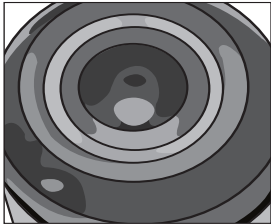
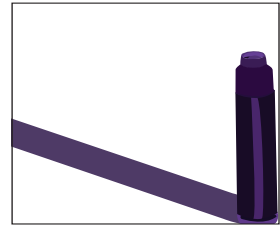
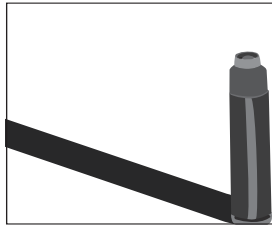
I had a passion for graphic design since I was in high school but I did not had the courage to play and search with Photoshop or Illustrator,



Photoshop collage

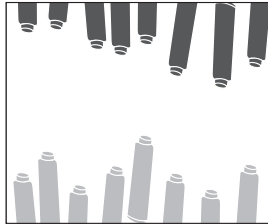


## illustrator



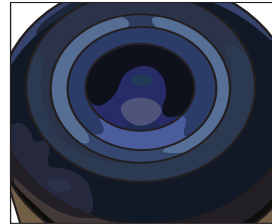
Powerful

قوة



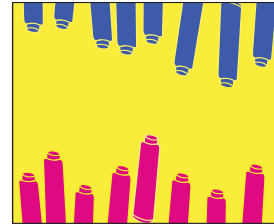
Conflict

صراع



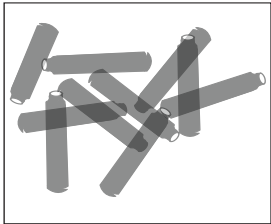
Powerful

قوة



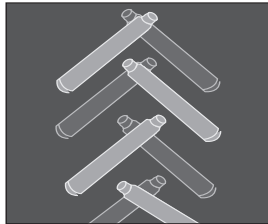
Conflict

صراع



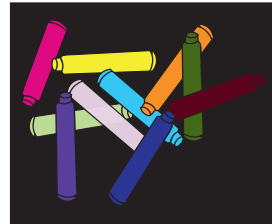
Busy

مشغول



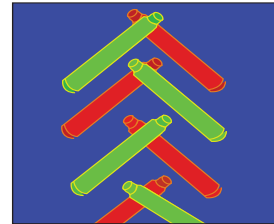
Unity

وحدة



Busy

مشغول



Unity

وحدة

# Typography

Using words to define my personality



Anger العصبية



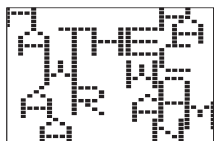
Hawra'a the tiny حوراء الضئيلة



Anger العصبية



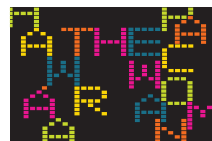
Hawra'a the tiny حوراء الضئيلة



Hawra'a the Pac-woman حوراء البات ومن



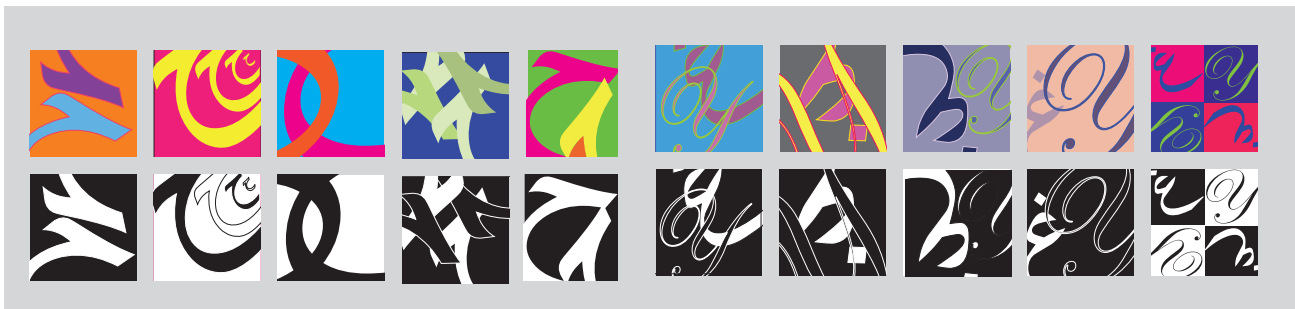
Hawra'a the comic حوراء الفكاهية



Hawra'a the Pac-woman حوراء البات ومن



Hawra'a the comic حوراء الفكاهية



## Designed three Breast Cancer posters for Hayaah the Zayed University Health Club







Hayaah **أياها**

# 'Wear it Pink' for Breast Cancer

**Time: from 10:00 to  
3:00**

**Day: Wednesday 26,  
10, 2011**





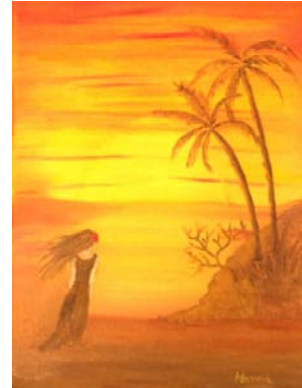
# Visual Art

# Paintings

## Nature



Acrylic on Canvas- 60x20 cm



Oil on Canvas- 40x20

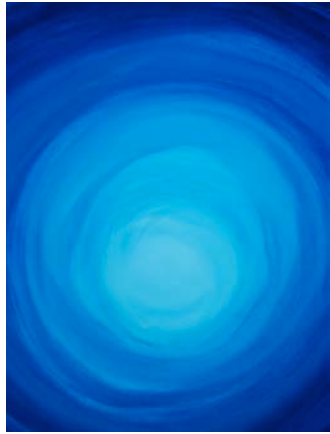


Oil and Acrylic on Canvas - 90x120 cm

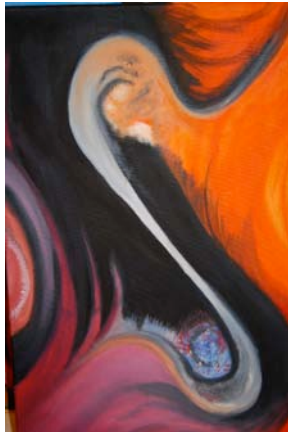


Oil on Canvas- 40x20

**Abstract**



**Oil on Canvas- 60x20**



**Oil on Canvas- 60x20**



**Oil on Canvas - 90x120 cm**

**African Paintings**



**Oil on Canvas - 90x120 cm**



**Oil on Canvas- 60x20**



**Oil on Canvas- 60x20**

# Drawing

**Tissue Box**



**Swine and Eagle**



**Still Life**



Wedding Memories



# Printmaking

## Visual Art

### Brand Bags

I printed Brand bags on cheap bags, so this will give poor people a chance to carry brand bags as well.



### Used Pronto print on fabric bag





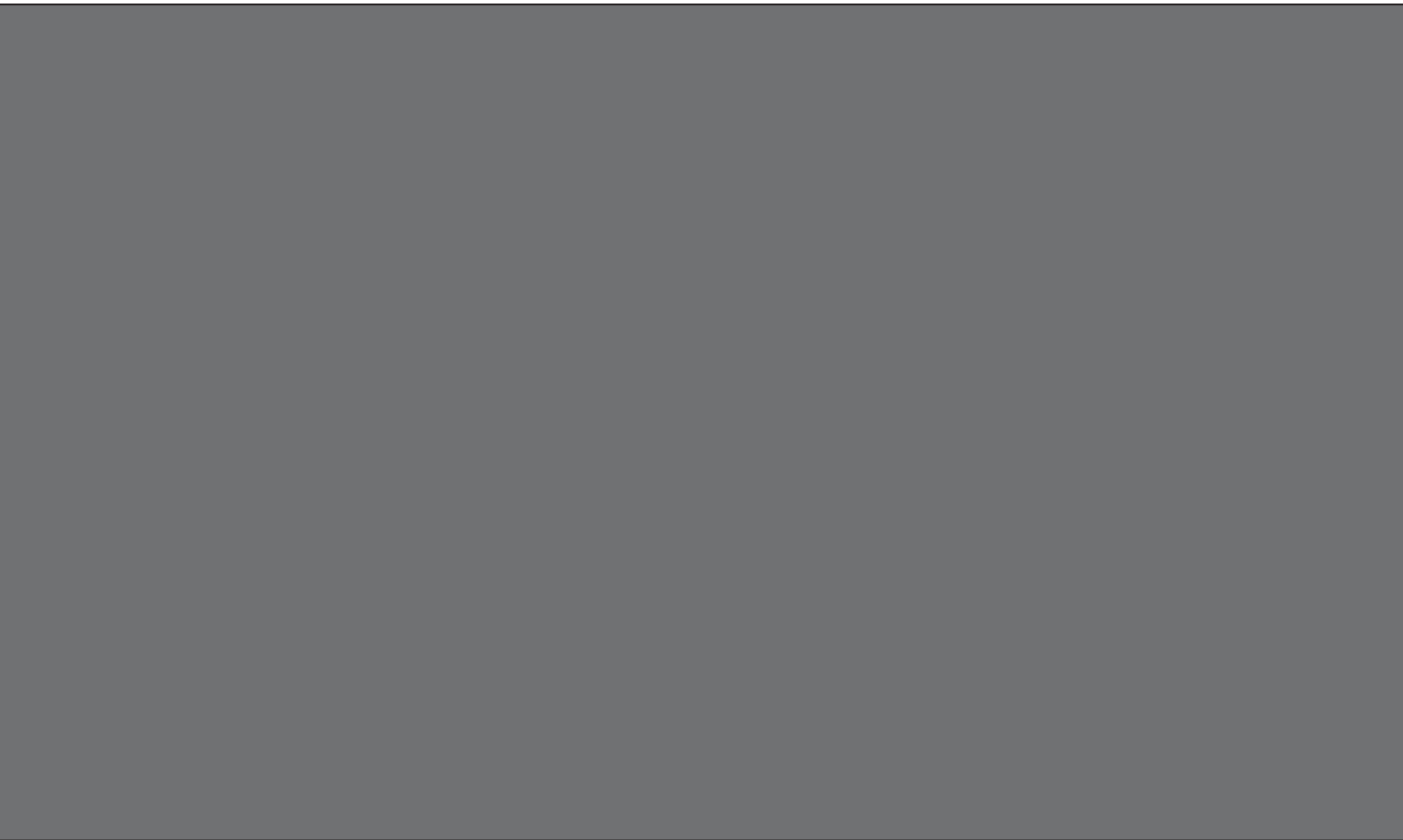


**Dry point Dolphins**



**Pronto on wood**





# Photography

# Photography

**Proud to be Emirati**





## Innocence of childhood



**Freedom  
Film Camera**





## OBJECTIVE

To achieve a position as an interior designer that will allow me to grow, building on the skills that I have acquired at Zayed University. I want to both contribute to my future company's clients and in addition look forward to about learning more about Interior Design in a real commercial .environment

## EDUCATION

Present: Zayed university – Collage of Arts:  
and Science Interior Design Dubai UAE  
Dubai International School Dubai, UAE 2008

## WORK EXPERIENCE

Department of Tourism and Commerce 2009  
Marketing (Information section, computer  
(updater

## SKILLS

### Computer Skills:

Microsoft office Skills  
Typing Skills  
Illustrator skills  
In Design skills  
AutoCAD  
Sketchup  
Photoshop skills

### Artist and Design Skills:

Painting  
Drawing  
Printmaking  
Photography  
Furniture DEsign

### Language Skills:

Fluent in Arabic and English (Typing  
(and Speaking  
Farsi

Organizational Skills and Teamwork



Hawra'a Hassan

حوراء حسن

Email: hawraa.hr@gmail.com

Phone: 050-4355435

Gender: Female

Nationality: Emirate

D.O.B: December, 17, 1990

Status: Single

Interior Desinger

2010

Participated in the zayed university Carnival

2009

Mini Tour Guide Certification (Training  
(Solutions

2008

Certification of Appreciation for the Arab  
Children Health Congress

TOFEL Certificate

2007

Member of the Student Council in Dubai  
International School

SAT Certificate

2007-2002

Science Fair organizer in Dubai International  
School

## REFERENCES

Upon Request

# Hawra'a Hassan

حوراء حسن

**Email:** [hawraa.hr@gmail.com](mailto:hawraa.hr@gmail.com)

**Website:** [www.wordpress.com](http://www.wordpress.com)

**Phone:** 0556565598  
0504355435

**P.O.Box:** 10534

*Interior Designer*

*Hawra'a Hassan*

